

# Open Space Strategy 2012- 2017



# CONTENTS

Introduction

Strategic context

Open space overview

Supporting evidence

Open space needs

Vision and key themes

Resources

Three year action plan

Measuring progress

Further information

# INTRODUCTION

Lewisham is a part of London, the largest, most culturally diverse and vibrant city in the European Union and home to over 7.5 million people.

Stretching from the banks of the Thames in the north, to the borders with Bromley in the south, the 13.4 square miles of Lewisham encompass strong communities who take pride in their local areas and neighbourhoods.

This sense of place ensures that while the borough and its neighbourhoods develop they maintain their unique identities and preserve Lewisham's rich natural, cultural and architectural heritage.

Lewisham has a population of over 270,000. The population is relatively young with one in five under 15 with one in seven being over 60<sup>1</sup>. It is the 15<sup>th</sup> most ethnically diverse local authority in England.

Two out of every five residents are from black and minority ethnic backgrounds and there are over 130 languages spoken in the borough, making links throughout London and across the world.

Lewisham has over 800 active voluntary and community sector organisations and more than 200 individual faith

groups. All these groups and many others help to strengthen communities by addressing local concerns and advocating on behalf of some of the most vulnerable in society.

Lewisham's future is intrinsically linked to that of London and the wider region. The borough is part of the Thames Gateway area which will see significant housing and economic growth in the near future. In London itself the number of jobs is predicted to grow by over half a million by 2016<sup>2</sup>.

In 2012 London will host the Olympic and Paralympic Games showcasing the city and the achievements and vibrancy of its communities. Lewisham's citizens will be well placed to be involved in this major international celebration and benefit from its legacy.

The borough is one of the greenest parts of south-east London with over a fifth of the borough made up of parkland and open space<sup>3</sup>. 'Green Flag' parks, attractive residential neighbourhoods and Lewisham's waterway network all combine to create a relaxing and pleasant environment in the midst of bustling city life.

The Open Space Strategy is guided by the National Planning Policy Framework March 2012, has taken findings set out in the Lewisham Leisure and Open Spaces Study 2010 (LLOSS) and has built upon the 2005-10 Open Space Strategy.

<sup>1</sup> According to the Office for national Statistics (ONS) 2007 Mid-Year Population Estimate on 29 September 2009 the population of Lewisham is 261,600

<sup>2</sup> ELS

<sup>3</sup> 726.11 ha Lewisham Leisure and Open Spaces Study 2010, page 96, Table 4.1

# Strategy layout

## **Strategic Context**

Sets out the national, regional and local context providing an overview of key Council policies in relation to open space.

## **Open space overview**

Details the key aspects of the main typologies of open space in the borough.

## **Supporting evidence**

Outlines the evidence provided in the Lewisham Leisure & Open Spaces Study 2010. This PPG17 compliant study provides a detailed analysis of the quality, quantity and accessibility of open space in the borough.

## **Open space needs**

Assesses the open space needs as identified through detailed consultation with residents, park users, friends and amenity groups. Focus groups provided more in-depth analysis and discussion of the key issues raised.

## **Vision and key themes**

Sets out the vision for open space and the seven key themes identified to help achieve it

## **Resources**

Sets out the challenges for budget holders in delivering quality open space over the term of the strategy

## **Three year action plan**

An action plan identified to meet the first three years of the six year strategy in order to help achieve the vision for open space.

# STRATEGIC CONTEXT

This strategy has been shaped by national, and regional guidelines, the broader priorities of Lewisham Council and the specific aims for parks and open spaces. This has involved wide ranging consultation with other services and sectors, service users and the general public.

Lewisham's Sustainable Community Strategy 2008-20, Shaping our Future, sets out the broad themes that describe a 'sense of place' that all Council services aspire to. It has six priority areas to which open space contributes directly:

**Ambitious and achieving** – where people are inspired and supported to fulfil their potential

**Safer** – where people feel safe and live free from crime, anti-social behaviour and abuse

**Empowered and responsible** – where people are actively involved in their local area and contribute to supportive communities

**Clean, green and liveable** – where people live in high quality housing and can care for and enjoy their environment

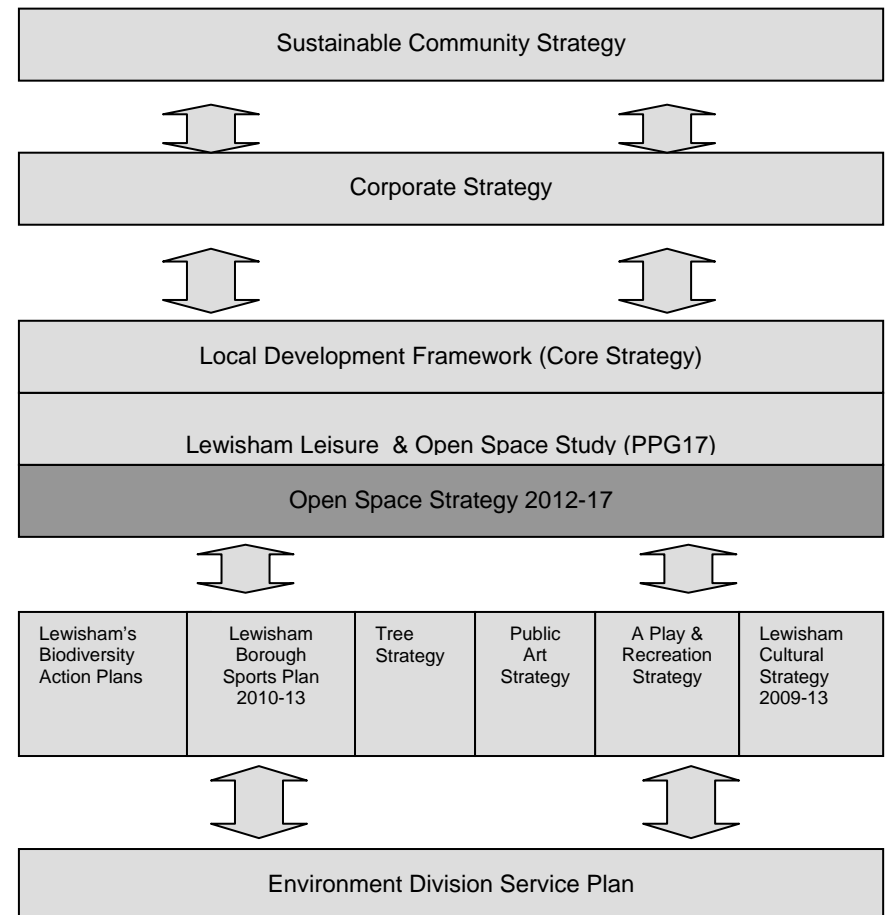
**Healthy, active and enjoyable** – where people can actively participate in maintaining and improving their health and wellbeing

**Dynamic and prosperous** – where people are part

of vibrant communities and town centres, well connected to London and beyond

The Open Space Strategy sits within a wider framework of strategies and service delivery plans. Together these set out the overall priorities for the area and the actual plans for how each service will meet local needs. *Figure 1* shows how these relate to each other.

**Fig. 1 Open Space Strategy Delivery Framework**



Key to developing this strategy is the need to review the national, regional and local strategic context for open space.

## National Context

The strategy has been guided by the **National Planning Policy Framework (NPPF)** published on 27 March 2012. The NPPF sets out the government planning policies for England and how they are expected to be applied.

The NPPF consolidates over 1,000 pages of planning guidance, including PPG17 into a single 59-page document and must be taken into account in the preparation of local and neighbourhood plans. It is also a material consideration in the determination of planning applications. At the heart of the NPPF is a presumption in favour of sustainable development.

There are *12 core planning principles* that should underpin both plan-making and decision-taking. (Para 17)

### Core planning principles

There are *12 core planning principles* that should underpin both plan-making and decision-taking. (Para 17)

1. Plan led – provide a practical framework within which decisions on planning applications can be made with a high degree of predictability and efficiency
2. Creative – finding ways to enhance and improve the places in which people live their lives
3. Proactively driving and support sustainable economic development

4. Securing high quality design and a good standard of amenity for all existing and future occupants of land and buildings
5. Taking account of the different roles and character of different areas, promoting the viability of our main urban areas and recognising the intrinsic character and beauty of the countryside
6. Supporting the transition to a low carbon future – taking into account flood risk and encourage the use of renewable resources
7. Contribute to conserving and enhancing the natural environment and reducing pollution
8. Encouraging the effective use of land by reusing land that has been previously developed (brownfield land)
9. Promoting mixed use developments
10. Conserving heritage assets in a manner appropriate to their significance
11. Actively manage patterns of growth to make the fullest possible use of public transport, walking and cycling, and focus significant development in locations which are or can be made sustainable
12. Supporting local strategies to improve health, social and cultural wellbeing

### Achieving sustainable development

The NPPF provides specific detail relating to 13 aspects of sustainable development which proposals and plan-making needs to comply with. These are:

- building a strong competitive economy
- ensuring the vitality of town centres
- supporting a prosperous rural economy
- promoting sustainable transport

- supporting high quality communications infrastructure
- delivering a wide choice of high quality homes
- requiring good design
- promoting healthy communities
- protecting Green Belt land
- meeting the challenge of climate change, flooding and coastal change
- conserving and enhancing the natural environment
- conserving and enhancing the historic environment
- facilitating the sustainable use of minerals.

The planning system should contribute to and enhance the natural local environment by:

- protecting and enhancing valued landscapes
- recognising the wider benefits of ecosystem services
- minimising impacts on biodiversity and providing net gains in biodiversity. (Para 109)

The impact on biodiversity needs to be assessed as well as ground conditions and environmental pollution. (Paras 118, 121) Decisions should aim to avoid noise from giving rise to significant adverse impacts and take into account the presence of Air Quality Management Areas. (Para 124)

## Regional Context

Regional policy is set out in the **London Plan – a spatial development strategy for Greater London (GLA) 2011**.

The Mayor's of London's vision is "Over the years to 2031 –

and beyond, London should: excel among global cities – expanding opportunities for all its people and enterprises, achieving the highest environmental standards and quality of life and leading the world in its approach to tackling the urban challenges of the 21<sup>st</sup> century, particularly that of climate change." The Mayor's six objectives for the new London Plan are to ensure that London is:

- A city that meets the challenges of economic and population growth** to ensure a sustainable, good and improving quality of life for all Londoners and helps tackle the huge issue of inequality among Londoners, including inequality in health outcomes.
- An internationally competitive and successful city** with a strong and diverse economy and an entrepreneurial spirit that benefits all Londoners and all parts of London; a city which is at the leading edge of innovation and research and which is comfortable with - and makes the most of - its rich heritage and cultural resources.
- A city of diverse, strong, secure and accessible neighbourhoods** to which Londoners feel attached, which provides all of its residents, workers, visitors and students - whatever their origin, background, age or status – with opportunities to realise and express their potential and a high quality environment for individuals to enjoy, live together and thrive.
- A city that delights the senses** and takes care over its buildings and streets, having the best of modern architecture while making the most of London's built heritage and which makes the most of and extends its wealth of open and green spaces and waterways, realising its potential for improving Londoners' health, welfare and development.
- A city that becomes a world leader in improving the environment** locally and globally, taking the lead in tackling climate change, reducing pollution, developing

a low carbon economy and consuming fewer resources and using them more effectively.

- f. **A city where it is easy, safe and convenient for everyone to access jobs, opportunities and facilities** with an efficient and effective transport system which actively encourages more walking and cycling and makes better use of the Thames, and supports all the objectives of the London Plan.

It includes a number of important policies related to climate change and green infrastructure in the London Plan, including:

**Policy 2.4: The 2012 Games and their legacy** sets out the Mayor's long term vision for the Olympic Park and surrounding areas embed exemplary design and environmental quality including attention to the response to climate change and provision of exemplary energy, water conservation and waste management

**Policy 2.18: Green infrastructure: the network of open and green spaces** sets out the Mayor's commitment to work with all relevant strategic partners to protect, promote, expand and manage the extent and quality of, and access to, London's network of green infrastructure

**Policy 5.1: Climate change mitigation** seeks to achieve an overall reduction in London's carbon dioxide emissions of 60 per cent (below 1990 levels) by 2025

**Policy 5.2: Minimising carbon dioxide emissions** requires development to make the fullest contribution to minimising carbon dioxide emissions in accordance with the energy hierarchy

**Policy 5.3: Sustainable design and construction** sets out to promote and protect biodiversity and green infrastructure

**Policy 5.9: Overheating and cooling** seeks to reduce the impact of the urban heat island effect in London and encourages the design of places and spaces to avoid overheating and excessive heat generation, and to reduce

overheating due to the impacts of climate change and the urban heat island effect on an area wide basis

**Policy 5.10: Urban greening** seeks to promote and support urban greening, such as new planting in the public realm (including streets, squares and plazas) and multi-functional green infrastructure, to contribute to the adaptation to, and reduction of, the effects of climate change. It also seeks to increase the amount of surface area greened in the Central Activities Zone by at least 5% by 2030, and a further 5% by 2050

**Policy 5.11: Green roofs and development site environs** sets out major development proposals should be designed to include roof, wall and site planting, especially green roofs and walls where feasible, to deliver as many of the following objectives as possible:

- a. adaptation to climate change (i.e. aiding cooling);
- b. sustainable urban drainage;
- c. mitigation of climate change (i.e. aiding energy efficiency);
- d. enhancement of biodiversity;
- e. accessible roof space;
- f. improvements to appearance and resilience of the building;
- g. growing food

**Policy 5.12: Flood risk management** seeks to work with all relevant agencies including the Environment Agency to address current and future flood issues and minimise risks in a sustainable and cost effective way, such as providing flood storage/conveyance or setting development back from rivers

**Policy 5.13: Sustainable drainage** seeks to utilise sustainable urban drainage systems (SUDS) unless there are practical reasons for not doing so, and should aim to achieve Greenfield run-off rates and ensure that surface water run-off is managed as close to its source as possible



#### **Policy 5.14: Water quality and wastewater infrastructure**

seeks to work in partnership with the boroughs, appropriate agencies within London and adjoining local planning authorities to ensure London has adequate and appropriate wastewater infrastructure to meet the requirements placed upon it by population growth and climate change

#### **Policy 7.15: Reducing noise and enhancing soundscapes**

seeks to reduce noise and support the Mayor's Ambient Noise Strategy and Open Space Strategy

The London Plan Monitoring Framework related to green infrastructure is mentioned below and the indicators will be reported on the London Plan Annual Monitoring Report to review how effective the policies are and consider if they need to be reviewed and replaced.

- Maximise the proportion of development taking place on previously developed land. Maintain at least 96 % of new residential development to be on previously developed land
- Minimise the loss of open space- no net loss of open space designated for protection in LDFs due to new development
- Loss of garden land to residential development - No more than 120 residential units to be developed on garden land/year
- Protection of biodiversity habitat- No net loss of designated Sites of Importance for Nature Conservation
- Reduce carbon dioxide emissions through new development
- For strategic developments achieve zero carbon in residential development by 2016 and zero carbon in all development by 2019
- Improve London's Blue Ribbon Network: Restore 15km of rivers 2009–2015

## Local Context

### **Local Development Framework**

Local Planning Policy is set out in the **Lewisham Core Strategy**, the key planning document in the **Lewisham Local Development Framework (LDF)**

Relevant Lewisham Core Strategy

#### **Core Strategy Objective 5: Climate Change**

Seek to support environmental protection and enhancement including establishing ecological networks

#### **Core Strategy Objective 6: Flood Risk reduction and water management**

seeks to protect the borough from the risk of flooding and reduces the effect of flooding

#### **Core Strategy Objective 7: Open spaces and environmental assets**

seeks to protect and capitalise the environmental, ecological and biodiversity features of Lewisham to promote health and well-being.

#### **Core Strategy Objective 10: Protect and enhance Lewisham's character**

seeks to protect Lewisham's distinctive local character through sensitive and appropriate design in local rivers and landscape.

#### **Core Strategy Policy 7: Climate change and adapting to the effects**

- adopts a partnership approach to implement the principles of 'avoidance, mitigation and adaptation' to reduce Lewisham's CO2 emissions.

#### **Core Strategy Policy 8: Sustainable design and construction and energy efficiency**

-prioritises the reduction of the environmental impact of all new developments

#### **Core Strategy Policy 10: Managing and reducing the risk of flooding**

- seeks to secure sustainable urban drainage and living roofs/walls

### **Core Strategy Policy 11: River and waterways network -**

requires Development adjacent to rivers and the waterway network should contribute to their special character by improving the urban design quality and natural ability of the rivers and waterways to function, the vitality of the river frontages, and improving access to the foreshore and naturalising flood defenses

### **Core Strategy Policy 12: Open space and environmental assets**

recognises the strategic importance of the natural environment and to help mitigate against climate change the Council will conserve nature, green the public realm and provide opportunities for sport, recreation, leisure and well-being.

### **The following Lewisham Unitary Development Plan (2004) policies are saved beyond 29<sup>th</sup> June 2011 and not superseded by the Lewisham LDF Core Strategy.**

**URB 13 Trees** seeks to maintain, protect and increase the numbers and quality of trees in the Borough, make Tree Preservation Orders wherever necessary and require developers, as a condition of planning permission, to retain existing trees and to plant appropriate new ones where this is appropriate and practicable

**OS 7 Other Open Space** resists inappropriate development on the areas of Public Open Space (POS) or Urban Green Space (UGS)

**OS 16 World Heritage Site Buffer Zone** gives special consideration to developments within the declared World Heritage Site Buffer Zone.

**HSG 7 Gardens** requires all new dwellings the provision of a readily accessible, secure, private and useable external space.

### **Planning Obligations in planning for green infrastructure**

The LDF Planning Obligations Supplementary Planning Document (SPD) provides greater transparency and openness in the way planning obligations are agreed with developers. It also provides additional information to implement the policies in the development plan and will be a material consideration in determining planning applications within the borough. It provides specific guidance on circumstances when obligations will be secured

### **Core Strategy Policies Monitoring and Review**

The Council publishes the Annual Monitoring Report (AMR) annually in December to provide a summary of all development and land use within the borough. These help to understand:

- What impact local development document policies are having on other targets set at national, regional or local level?
- Whether any policies need to be amended or replaced because they are not working as intended or are not achieving sustainable development objectives?
- What action needs to be taken if policies need to be amended or replaced?

The current AMR indicators related to green infrastructure are:

- No. of approved developments which incorporate SUDS
- Inappropriate development on open space
- % of eligible open spaces managed to Green Flag award standard
- No. of living roofs/walls
- No. of new allotments
- Changes in areas of biodiversity importance

diseases (lower GI and breast cancer, diabetes, coronary heart disease and cerebrovascular disease) is £3,797,260.<sup>4</sup>

### **Playing Pitch Strategy**

A Playing Pitch strategy for Lewisham was compiled by Strategic Leisure on behalf of the Council in June 2009 looking forward to the period up to 2025. The report provides an overall pitch assessment for the borough. The strategy assessed a number of key outcomes including the identification of adequate levels of provision for grass, Artificial Turf Pitch (ATP) and training areas to meet future needs; the protection of existing pitches; the quality of pitches and ancillary changing accommodation; public and club provision and adequate resources required for management and maintenance.

### **Lewisham Borough Sports Plan**

The Borough Sports Plan provides the Council and its key partners, such as the Lewisham Community Sport and Physical Activity Network (CSPAN) , with an overarching framework for the delivery of sport in the borough for the period 2010-13. This coordinated approach to sports planning provides a clear strategic direction for sport in the borough.

The overarching vision for sport in Lewisham is to increase opportunities to participate in sport at all levels and for all ages. In seeking to increase opportunity to participate it is important to have accessible facilities to meet user needs.

The Lewisham Physical Activity Plan (2010-13) notes that physical inactivity is associated with over 20 adverse health outcomes including increased total mortality. The estimated total annual cost to Lewisham NHS, based on just five

### **Play and Recreation Strategy**

The strategy sets out the Councils commitment to ensure that all children in Lewisham should have access to places to have fun in a safe, happy environment and where their play should contribute to their health, well being and learning. Play facilities should be of good quality standard and be accessible to encourage a wide usage from all sections of the community.

The strategy aims to supports the development of play opportunities for children and young people through planning and service delivery.

The key principles of the Play and Recreation strategy are that play should be freely chosen, play facilities or activities provided are safe, play provision must be well planned in partnership with children and young people. Play in whatever form should not discriminate and play should foster independence and healthy self esteem and offer opportunities for social interaction. In addition play should increase knowledge, creativity and capacity to learn about respect for others, caring for their environment, and recognising a child's need to test boundaries whilst keeping safe.

<sup>4</sup> Department of Health Be Active, Be Healthy 2009

## **Biodiversity Action plan**

The Lewisham Biodiversity Partnership was established in 1999 to consolidate the interests and expertise of a range of organisations and individuals with a duty to, or interest in, conserving the Borough's wildlife and natural environment. The Partnership has developed a series of Action Plans designed to conserve, enhance and promote biodiversity, which the Open Space Strategy feeds into. These plans relate to certain species and habitats but also to open spaces, water, health and culture. Residents can follow how the Council, Friends Groups and other local organizations and individuals are contributing to these actions by visiting the Biodiversity Action Recording System [BARS](#) website at:<sup>5</sup>

<sup>5</sup> [http://ukbars.defra.gov.uk/plans/lbap\\_plans.asp?LBAP={15710A14-BB2E-48EF-ACCD-4DDD814EA229}&CO=](http://ukbars.defra.gov.uk/plans/lbap_plans.asp?LBAP={15710A14-BB2E-48EF-ACCD-4DDD814EA229}&CO=)

or by following the nature conservation blog:  
<http://www.natureconservationlewisham.co.uk>

# OPEN SPACE OVERVIEW

## Typology of Open Space

**Parks and Gardens:** includes urban parks, county parks and formal gardens

**Children's Play:** includes equipped play areas, multi-use games areas (MUGA), BMX tracks and skateboard parks

**Natural and Semi-Natural Greenspace:** includes green corridors, woodlands, scrubland, wetland, and nature conservation sites

**Outdoor Sports Facilities:** includes pitch sports, athletic tracks, tennis, bowls and golf

**Amenity Greenspace:** housing open space, village greens, informal recreation space, hard-surfaced areas (civic space) roadside enclosure

**Allotments and Community Gardens:** site opportunities for those people who wish to grow their own produce

**Green Corridors;** includes grids, chains and networks

**Cemeteries and Churchyards:** Quiet contemplation and burial of the dead, often linked to the promotion of wildlife conservation, biodiversity and to provide a link to the past

## Parks and Gardens

In the hustle and bustle of modern inner city life the significance of local parks and gardens cannot be underestimated. For many residents they have a crucial impact on both quality of life and the perception of the area they live and work. Parks and gardens provide accessible opportunities for a range of informal recreation, formal sporting opportunities and a place for peace and relaxation. They provide space to walk the dog, look at the flowers, meet friends, and a space for children of all ages to play.

The audit of open spaces (LLOSS) identified 51 sites ranging from Metropolitan Parks (Beckenham Place Park and Blackheath), District Parks, Local and Small Local Parks. Parks and gardens cover 373ha and account for 51% of all open space in Lewisham. Whilst the borough is fortunate to have a good geographic spread of parks and gardens certain areas are found to be deficient, these include the Catford South and Perry Vale wards. Whilst it is difficult to create new spaces the quality of existing parks and gardens has a significant importance to the perception of the local neighbourhood. The LLOSS undertook a quality inspection of parks and gardens based upon the quality aspects of the Green Flag Award scheme. (appendix B) Those parks and gardens scoring under 46% (average) were recommended for possible improvement to a 'good' standard.

The three-year action plan identifies a number of proposed improvements to increase quality of provision.

*"Many members have chosen to live near Blackheath because its environment greatly enriches their lives"*  
*Blackheath Society*

## **Children's play**

The provision of facilities for children and young people is important in facilitating opportunities for play and physical activity and the development of movement and social skills. Provision for children and young people consists of equipped play areas and specialised provision for young people, including skate parks, multi-use games areas (MUGA's) and teen shelters.

The LLOSS audit of facilities identified 81 play areas mainly situated in parks, gardens and housing amenity sites. A number of sites are dedicated solely to children's play such as the adventure play grounds.

Lewisham has recently made huge improvements to children's play through external grant funding from the Play Builder and Community Spaces programmes. This has ensured that 10 playgrounds have been enhanced and a new skatepark built at Telegraph Hill Park.

## **Natural and semi natural green spaces**

Natural green spaces are open spaces that include woodland and scrub, grassland, wetlands, open and running water and wastelands. Natural green spaces not only provide valuable habitat for wildlife but also opportunities for environmental education and awareness, biodiversity and nature conservation.

There is 520 hectares of natural green space within the borough, including the Thames. A number of sites in the borough have been designated as being either of Metropolitan Importance (4 sites), of Borough Importance Grade I (7 sites) or II (28 sites) or of Local Importance (25

sites) for Nature Conservation. The protection of these sites is crucial to maintaining a high level of biodiversity in the borough.

Access to natural green spaces in Lewisham, where people can experience nature, is generally good with most people having access to a site of designated ecological importance within 1km walking distance. There are pockets of deficiency in the north part of Perry Vale ward crossing into Crofton Park ward, east part of Catford South ward, Northern part of Grove Park crossing into Lee Green, southern part of Lewisham Central ward and then a swathe of land in central, north east and north Telegraph Hill ward that crosses into Brockley and New Cross and then into Evelyn wards.

Where insufficient provision exists potential spaces have been identified that can be improved so that they can offer meaningful experience of nature and wildlife to address the deficiency as set out in the Action Plan .

*"Lewisham is extremely lucky that we have the rivers that can be enjoyed. Unlike other inner London boroughs in Lewisham Parks and Open space's one still feels that one might encounter some new wildlife, there is a randomness and the unexpected wildlife encounter is possible".*

*Lewisham Biodiversity Partnership*

## **Outdoor Sports facilities**

Outdoor sports includes stand alone sports facilities such as public, private, leisure and educational sports grounds and playing fields. They also include sports facilities listed under

other typologies for example public parks.

### **Amenity Green space**

Amenity green space is classified as housing area green space, roadside enclosures and verges and other sites usually near to people's homes and may include facilities such as play areas. Many of these sites are simple and less formal but in their own way they provide valuable aesthetic spaces.

The housing amenity sites are managed by a number of housing providers in the borough and many sites are currently being improved, recognising the importance quality green space can play, alongside improvements to the housing stock.

*"creating quality open spaces"*  
*Affinity Sutton – housing provider Lee Green*

### **Allotments and community gardens**

Lewisham's Allotments and Community Gardens have an intrinsic role in the health and well-being of the boroughs residents, offering multiple benefits –

- **Personal** – individuals actively involved in managing their own space, producing their own food and engaging in their local environment.
- **Community Building** – engaging groups of all ages and cultures in taking responsibility and ownership for their local Open Spaces; shared decision making and shared skills input.

- **Health** – access to locally grown nutritious food, regular outdoor exercise and fostering of physical and mental well-being.
- **Education** – all ages learning how to grow, maintain, plan and harvest crops; learn about organic, sustainable methods of land management as well as encouraging co-operative, social skills.
- **Environmental sustainability** – provides the forum for and encourages the prudent use of resources (water/composting), reduces food miles and encourages wildlife habitats.

There are currently 40 allotments sites within the borough catering for 900 plot holders, including schools and community groups.

Lewisham has an above average number of allotment sites compared to other London Boroughs and whilst waiting lists are lengthy in certain areas of the borough, demand is significantly less in others. The key to managing waiting lists lies in supporting local allotment committees to effectively manage their sites, ensuring regular maintenance of plots and promoting those allotments in areas of less demand.

All allotments applicants are given information on local Community Garden growing spaces so there is the option of taking part in food growing until an allotment plot becomes available in their area.

## Community Gardens

At the Parks & Open Spaces conference of Autumn 2009 Lewisham launched the Capital Growth campaign locally, making a commitment to create 60 new food growing spaces by the end of 2012.

This has already been surpassed with a current number of 74 (March 2012) community gardens registered, including gardens within schools, allotments, community centres, businesses, housing areas and previously neglected land.

The varied demand, across the borough, of those wishing to access open space for growing is reflected in the increasing interest in community gardens which offer an alternative to allotments; for many residents community gardening allows flexibility of commitment and time, increases the opportunity to garden more locally and be more active in improving the environment of their local area.

Lewisham community gardens range from small scale raised beds (Sandbourne Road) to larger landscaped areas containing nature areas, floral schemes as well as crops (Grow Mayow). The gardens are a great educational tool offering a broad selection of activities/training including Pond Life talks, Fruit Tree Maintenance workshops, Forest Gardening, Permaculture workshops and Seed Sowing workshops.

The Council is currently supporting the formation of a Lewisham Community Gardens Forum aiming to build

capacity for residents to manage, take part and share skills/experience in either setting up community gardens or looking at ways to develop and maintain those currently established.

Lewisham is further encouraging participation and development of gardens by offering –

- A Small Grants Scheme
- Advice on constitutions
- Land Searches
- Workshops
- Funding for Meetings of the Lewisham Community Gardens Forum
- Working with partners such as housing providers to provide a protocol for the process of assisting groups in setting up gardens.
- Mapping of Community Gardens
- Lewisham advisory guides on creating Community Gardens

## Green Corridors – networks, chains and grids

Greenspaces are important in their own right but there are also benefits in creating and enhancing links between sites to form a connected green infrastructure for both wildlife and people.

The South East London Green Chain is a linked system of over 300 open spaces connected by a network of footpaths that stretch 50 miles (80km) from the riverside at Thamesmead, Erith and the Thames Barrier, southwards to



Beckenham Place Park and through to Crystal Palace Park. The South East London Green Chain was extended in 2011 to include Sydenham Well Park, Sydenham Hill Woods, Dulwich Park and Nunhead Cemetery. Lewisham officers attend the Green Chain Working Party to collaborate with partners from the London boroughs of Greenwich, Bromley, Bexley and Southwark to protecting and improving the Green Chain.

The Waterlink Way is a shared route for cyclists and pedestrians that runs from the River Thames at Deptford Creek southwards to the Green Chain Walk at Beckenham Place Park. It follows the route of Sustrans Route 21 as it passes through Inner London on its way to the south coast at Eastbourne. The Waterlink Way takes users north south through the centre of the borough along the rivers Ravensbourne and Pool. It serves as a valuable blue-green artery connecting many of the boroughs green spaces with the green chain walk network and has been a driving force for restoring the river corridor and its associated habitats.

Both the Green Chain and Waterlink Way forms part of the South East London Green Chain Plus Area which is a component of the All London Green Grid (ALGG). The ALGG aims to create a regional network of interlinked and multi-purpose open and green spaces with good connections to the places where people live and work, public transport, the capital's rivers especially the Thames, the countryside and urban fringe.

## **Cemeteries and Churchyards**

Cemeteries and churchyards can provide a valuable contribution to the portfolio of open space provision. They provide a play for peaceful contemplation and often have wildlife conservation and bio-diversity value.

The borough has three cemeteries, Grove Park, Hither Green and Ladywell and Brockley Cemetery. In addition the Bromley Hill Cemetery falls within the Lewisham borough boundary but is managed by the London Borough of Bromley.

The Council maintains five churchyards, St Mary's, St Margaret's, St Pauls, St Bartholomew's, and St Andrew's under the 1906 Open Spaces Act where deeds of grant were signed agreeing that the churchyards are to be used by the public as open space and that the Council would maintain them in a 'good and decent' state.

Cemeteries and churchyards can make a significant contribution to the provision of urban green spaces often providing a sanctuary for wildlife. A wide variety of habitats can be found supporting the natural and semi natural space typologies.

*"The opportunity to study the flora and birds is not to be underestimated"*  
*Friends of Brockley and Ladywell Cemetery*

# SUPPORTING EVIDENCE

## Lewisham Leisure & Open Space Study

The Open Space Strategy is based on the findings set out in the Lewisham Leisure & Open Space Study May 2010 (appendix A) which was compiled before the National Planning Policy came into force in March 2012 replacing PPG 17. This study, compiled by Strategic Leisure on behalf of the Council, makes recommendation on the quality, quantity and accessibility of open space in addition to demands and needs looking forward to 2025. This study is both compliant with the now removed PPG17 and its replacement, the National Planning Policy Framework. The Open Space Strategy builds on the findings of the study setting it in context for delivery over the next 6 years in the form of two 3-yearly implementation plans.

### Population Forecast

The population across the borough is projected to increase from 273,000 in 2008 to almost 320,000 by 2031. It is therefore considered that there will be a substantial demand for open space provision particularly adjacent to new build development sites for example Conveys Wharf in Deptford and Lewisham Town Centre . Based upon the quantity standard for parks and gardens of 1.41ha per 1000 residents the area of new parks and gardens would have to be an additional 63.5ha which is unlikely to be achieved given the lack of space in our largely residential borough. This places a greater need to protect and enhance existing open space, and to ensure major development sites adequately consider the provision of quality new open space.

### Quality of open space

The supporting evidence provides details of how the quality of each site was achieved. Site quality audits were undertaken and based upon the field assessment of the national quality standard for parks and open space the 'Green Flag Award'. The assessments consider sites from a visitor perspective and are based upon a 'snapshot' view at the time of visit. The quality assessment for parks is attached as (appendix B)

### Typology of Open Space

Lewisham currently covers 3,521.87 ha of which 726.11ha is open space. This equates to 20.62% of land across Lewisham being open space.

Table 1 provides a breakdown in hectares of each typology of open space<sup>6</sup>.

Appendix C lists the schedule of open space sites surveyed together with map

### Areas of Deficiency

Table 2 illustrates the breakdown by Council Ward of the percentage of Public Parks and Gardens, the density of population per ward, and the percentage of Public Parks and Gardens per 1000 head of population. The figures show wide variances between wards with Bellingham having the greatest percentage at 6.60ha per 1000 head of population compared with 0.31ha in Brockley and 0 ha in Catford South.

<sup>6</sup> Lewisham Leisure and Open Space Study 2010 table 1.1

Table 1 Summary of provision across LB Lewisham 2009

Typology	Provision in Hectares	Provision per 1000 Population
Parks and Gardens	373.33	
Metropolitan Sites of Importance – Natural and Semi Natural	16.88	
Grade I Sites of Importance - Natural and Semi Natural	7.16	
Grade II Sites of Importance - Natural and Semi Natural	3.85	
Local Sites of Importance - Natural and Semi Natural	2.88	
Green Corridors	90.49	
Outdoor Sports Facilities (excluding golf course)	120.10	
Amenity Greenspace	31.12	
Provision for Children and Young people – Stand alone provision	2.27	
Allotments and Community Gardens	24.85	
Cemeteries and Churchyards	53.18	
<b>Borough Total</b>	<b>726.11ha</b>	<b>2.74ha</b>

Lewisham Leisure and Open Space Study 2010

Table 2 Provision of Parks and Gardens across wards

Ward Name	Area (ha)	Public Parks & Gardens ha	% Parks and Gardens	Population 2010	Area of POS (ha) per 1000 population	Population Density per ha
Bellingham	308.13	93.41	30.32	14,150	6.60	45.92
Blackheath	230.3	70.79	30.74	13,807	5.13	59.95
Brockley	166.39	4.77	2.87	15,418	0.31	92.66
Catford South	187.41	0	0.00	14,567	0.00	77.73
Crofton Park	172.84	10.32	5.97	14,523	0.71	84.03
Downham	237.32	37.93	15.98	14,816	2.56	62.43
Evelyn	162.79	14.97	9.20	16,486	0.91	101.27
Forest Hill	182.43	11.1	6.08	14,725	0.75	80.72
Grove Park	255.88	15.03	5.87	14,605	1.03	57.08
Ladywell	160.35	22.87	14.26	12,988	1.76	81.00
Lee Green	171.95	5.79	3.37	12,580	0.46	73.16
Lewisham Central	208.94	12.01	5.75	15,676	0.77	75.03
New Cross	184.78	10.02	5.42	16,326	0.61	88.35
Perry Vale	168.29	7.21	4.28	15,150	0.48	90.02
Rushey Green	176.78	26.97	15.26	14,033	1.92	79.38
Sydenham	172.81	8.46	4.90	15,977	0.53	92.45
Telegraph Hill	156.23	4.62	2.96	15,076	0.31	96.50
Whitefoot	218.25	17.06	7.82	13,822	1.23	63.33
	<b>3521.87</b>	<b>373.33</b>	<b>10.60</b>	<b>264,725</b>	<b>1.41</b>	<b>75.17</b>

Lewisham Leisure and Open Space Study 2010

## Setting Local Standards

The Lewisham Leisure and Open Space Study, section 5, examines the development of local standards for the open space typologies. The local standards consider surpluses and deficiencies in provision on the basis of qualitative assessments undertaken.

Table 3 sets out the standards that the Council aims to apply across the borough.

Standard	Quantity per 1000 pop	Quality	Accessibility
Local parks and gardens	1.41ha	46% or above	400 metres
District parks and gardens	1.41ha	61% or above	1.2km
Metropolitan Parks and gardens	1.41ha	61% or above	3.2km
Natural and semi natural greenspace – including green corridors	2.44ha	46% or above	1km
Local Nature Reserves – including green corridors	2.44ha	61% or above	1km
Amenity housing greenspace	0.12ha	47% or above	400m
Allotments	0.9ha	46% or above	1.2km

## OPEN SPACE NEEDS

Open space needs have been identified through extensive consultation with local residents and users of open space in Lewisham.

### Consultation

A parks and open space survey was undertaken in the spring of 2011 and more in-depth focus groups in early 2012, the outcomes of which have influenced the key themes and action plan.

### Key Survey Findings

A total of 301 web surveys and 130 postal surveys were completed.

### Reasons for visiting the park or open space

The most popular reasons stated for visiting our parks and open spaces were to relax, to walk, to see the birds and wildlife, to enjoy the peace and quiet, to walk for exercise and to visit the playground.

*"Never underestimate the need and benefit provided by quiet open spaces"*

*Greenwich Society- users of Blackheath*

### Frequency of visit

47% of users visited the park or open space on a daily basis in the summer months with a further 44% on a weekly basis. This figure dropped to 29% visiting on a daily basis and 42% weekly during the winter months.

### Method of Transport

88% of visitors walked to their local park or open space with 8% travelling by bicycle

### Distance from park

47% of visitors lived less than 5 minutes walk time to get to their local park with a further 34% living less than 10 minutes walk time

### Customer satisfaction

38% of users were very satisfied that their local park or open space was clean and cared for, with a further 46% of users saying they were satisfied.

*"A good quality park is a must for a neighbourhood"*  
*Hither Green Community Association*

### Protecting open space

An unsurprising 95% of responders strongly agreed that the Council should protect parks and open spaces from development such as housing.

*"Protect all open spaces, they are the "lungs of London"*  
*Manor House Gardens User Group*

### Feeling safe

28% strongly agreed that they felt safe using their park or open space with a further 52% agreeing that they felt safe.

*"The park keeper makes me feel safer and he interacts with other users, a positive"*  
*Friends of Mayow Park*

### **Events**

74% would like to see more farmers markets with 61% liking to see more concerts/music festivals and community festivals.

57% would like to see more children's activities.

### **Difficult choices – reduction in budgets**

When it came to protecting or improving the service offered during this period of financial uncertainty the majority voiced the opinion that they would like to see the reduction of hours of the Park Keeper service reversed when circumstances allow.

*"Park keepers should be protected"*  
*Friends of Chinbrook Meadows*

## Key Findings Focus Groups

### **Meeting needs**

The Young Mayor's Forum felt that there was insufficient facilities for their age group, inasmuch as many playgrounds were targeted at the under 13's. They suggested more gym equipment, and large slides. The Pensioners Forum highlighted the need for more seating and toilets. The

Volunteers group felt that their needs were met but suggested more educational facilities for children would be welcomed. The friends and amenity groups recommended more drinking fountains, more allotment space and orchard planting.

### **Barriers to access**

Some members of the Young Mayor's Forum felt that older users were uncomfortable and nervous in their presence and would prefer they were not there. They suggested more inter generational activities so all age groups could mix. The Pensioners Forum highlighted dogs off the lead as a barrier, in particular the concern that dogs would jump up and knock them over. Some spaces were identified as not being welcoming, clear site lines were important. The Disability group mentioned dogs "not under control". They also mentioned inconsiderate owners who fail to pick up after their dog. Poor quality footpaths were raised as a barrier to access, and raised the issue of inconsiderate cyclists. The Volunteers group highlighted that too many fenced areas could give the wrong impression however they recognised that fenced dog exercise areas could be beneficial. The friends and amenity groups highlighted the concern about dogs off the lead and the provision of toilets.

### **Perception of safety**

The Young Mayor's forum highlighted the importance for good quality lighting in parks open after dark. They expressed the view that the more open spaces are used the safer they feel. The Pensioners Forum welcomed the use of park keepers, saying they raised the perception of safety,

however some members felt they needed a higher profile and more prominent uniform. Some members felt intimidated by the presence of young people, particularly when in groups, they also raised the issue of poor lighting. The Disability group mentioned apprehension during school holidays due to the influx of young people, they also raised concerns about the need for visible site lines. The Volunteers group welcomed the new entrance at Manor Park which they felt would make the southern section of the park safer. They raised the issue again about dogs off leads, the need for on-site staff and good quality lighting. The friends and amenity groups generally felt safe when using parks and open spaces during the day but some members felt uneasy when using 'open' parks after dark.

### **Quality of life**

The Young Mayor's forum agreed that good quality open spaces improved their local area. They said they were 'nice places to meet friends' and that people should take pride in, and look after, their local space. The Pensioners forum suggested a more varied events programme including more music. Facilitated events were highlighted as very important to quality of life. The friends and amenity groups generally felt that their quality of life was improved by good quality open spaces.

*"one of the people my group had not been out for 8 years until they were invited to take part in the Rivers and People project".  
Ladywell Day Centre, Day Services Officer*

### **Improving health and well being**

The Young Mayor's forum recommended the installation of

more outdoor gym equipment. The Pensioners Forum welcomed the healthy walk programmes and suggested other forms of active recreation such as tai chi. The Volunteers group questioned the usage of outdoor gym equipment and suggested that many users don't require expensive equipment and would rather walk, or run. They liked the idea of organised runs and walk programmes but cautioned against too much structure – parks and open spaces were places free for people to do their own thing. The friends and amenity groups welcomed the Nature's Gym. The need for good quality changing rooms and toilets was raised in regards to pitch sports and activities.

### **Natural environment**

The Young Mayor's forum were generally ambivalent towards nature conservation, they displayed a lack of awareness about biodiversity in general and preferred close cut grass to play sports on to meadow grasslands. The Pensioners forum suggested a mixed economy of spaces as did the Disability group. The Volunteers group welcomed a more relaxed approach to parks management. The regeneration of Ladywell Fields was highlighted as an excellent example of how a more natural approach to river corridor and grasslands management. The development of additional meadow grasslands was to be encouraged. The friends and amenity groups highlighted the importance of locked nature reserves in terms of protecting valuable conservation sites. Encouraging more meadow grassland on Blackheath was also suggested.

*"More natural habitats were unanimously supported and the concept of relaxing mowing considered to be a positive*

*enhancement to open space”  
Lewisham Biodiversity Partnership*

*Northbrook Park Community Group*

### **Protecting open space**

In terms of protecting open space all groups were very clear that all types of open space should be vigorously protected.

*“There is sadness at the loss of green space”  
Pensioners Forum focus group*

### **Active involvement**

The Young Mayor’s forum were not against getting involved however it would depend on what was required. Some members were aware of park user groups and friends groups but had not taken part. The Disability group were not involved primarily due to their disability, however they did enjoy taking part in the Rivers and People events. The Volunteers group were already actively involved but raised the point that generally people were only interested in their local area. They did not feel there were barriers to them taking part but felt that more advertising of opportunities would be beneficial. The friends and amenity groups again were active participants. They felt that local residents should take an interest in their green space and help to keep them ‘nice’ and the Council could offer more support to helping groups. However many felt that volunteers should not be expected to take over Council roles as a result of the cuts.

*“By improving Northbrook Park we have created a whole different atmosphere in the park and surrounding area, it has brought the community together”*

### **Difficult choices – reduction in budgets**

All groups were reluctant to suggest one cut over another highlighting that all services were important. Generally they all wished to protect park keepers where they were currently available. No one wanted to see toilets and café’s closed and cleansing was deemed important. However some groups suggested lesser-used spaces could be cleaned less often and the introduction of more meadow grassland may help save money. Expensive floral displays could be reduced and replaced with lower cost options. The introduction of interdependently run café’s was seen as a low cost way of increasing on site staff and protecting ancillary facilities such as toilets.



# VISION AND KEY THEMES

## Vision for open space in Lewisham

'To protect, enhance and cherish open space for the benefit of local people, the wider community and for future generations'

## Seven key themes

**To achieve the vision for open space in Lewisham and to address the issues raised in the consultation, seven key themes were identified:**

These broad themes and their objectives give a clear strategic direction for contractors, organisations, developers, investors, private businesses, the voluntary sector and the wider community.

**Theme 1: To promote and support urban renaissance**

**Theme 2: To promote social inclusion and community cohesion**

**Theme 3: To promote healthy lifestyles and well-being**

**Theme 4: To promote a sustainable environment**

**Theme 5: To protect and enhance open space**

**Theme 6: To promote a safe and secure environment**

**Theme 7: To empower and support the local community**

## **Theme 1: to promote and support urban renaissance**

Lewisham is currently undergoing a period of major transformation. Large scale developments planned in Lewisham, Catford, New Cross and Deptford. New developments will provide housing and jobs to accommodate the growing population and revitalise our town centres. One of the key challenges will be to preserve or enhance the environment, community facilities and urban design standards in new developments.

The Local Development Framework, Core Strategy, supports

the Mayor of London's Great Spaces for London Initiative which is intended to revitalise London's unique network of public spaces, streets, parks and riverside walks<sup>7</sup>. This seeks to create or upgrade 100 public spaces in London in order to ensure that all in London can benefit from good public space. Lewisham Town Centre transport interchange is identified in the Core Strategy as requiring high quality design, as is the Kender Triangle at New Cross Gate.

New development brings opportunities to create attractive public spaces and good design will improve the quality of life for local people and help attract inward investment. The Council will invite tenders for a framework of landscape architects practices to ensure that new developments meet the quality aspirations set out in this strategy.

The number of Green Flags awarded to individual parks and open spaces is an excellent measure of how we are achieving high quality standards. The Council will continue to strive to maintain its existing number of prestigious Green Flag and Community Green Flag awards and seek to achieve its target of 15 green flags and 5 Community flags for 2015<sup>8</sup>.

## **Objectives**

- 1.1 To promote the highest standards of design and landscape management to enhance quality of life
- 1.2 To create an accessible network of open space, improving linkages and connections

<sup>7</sup> Core Strategy paragraph 7.112 page 110

<sup>8</sup> Mayoral commitment 2010

- 1.3 To promote quality open space through third-party endorsement

## **Theme 2: To promote social inclusion and community cohesion**

Lewisham has a wealth of active friends and user groups who contribute significantly to the day to day management of sites and the Council will continue to support and promote new groups. We continue to encourage people of all ages to become actively involved through hands-on activities and attendance at events and activities and the Council is committed to removing barriers to use.

Lewisham is one of London's most diverse boroughs and well-managed, good quality open space should enhance the existing rich cultural life of the local community. We can only deliver excellent services by understanding and addressing the varied needs of all our citizens and equality analysis<sup>9</sup> will be undertaken to promote equality of opportunity in everything that we do.

By means of the equalities analysis the Council can anticipate and identify the equality consequences of a particular policy initiative and/or service function ensuring that as far as possible any negative consequences for a particular protected characteristic<sup>9</sup> are eliminated, minimised or counterbalanced by other measures.

The need to market and promote parks and open spaces remains a key objective. The adoption of a park events

<sup>9</sup> Equality Act 2010

policy will set out clearly how events can be booked in our parks, A parks events marketing plan will help raise the profile of our open spaces and ensure that promotional information, such as the council's web site and printed literature are up to date and written in clear English . Access to translation will also be made available.

## **Objectives**

- 2.1 To strengthen community use of open space and promote greater social inclusion
- 2.2 To encourage usage of open space by young and old alike
- 2.3 To undertake equalities analysis' across the green space sector
- 2.4 To implement a parks events policy and to animate open space through events, arts and activities

## **Theme 3: To promote healthy lifestyles and well-being**

Lifestyle choices, including the activities we engage in are some of the major factors determining the quality of our health and general well-being. Regular exercise and physical activity keeps you fit and plays a crucial role in preventing illness and our attractive green spaces offer free and accessible facilities to encourage public use.

The London Plan requires that where new development occurs, provision for play and informal recreation, based on the expected child population, should be allowed for. This

needs to ensure they are good quality and secure with safe access.

The Lewisham Borough Sports Plan (2010-13) sets out its vision '*To increase opportunities to participate in sport at all levels and for all ages*'. The plan reinforces the importance of the sporting agenda and increasing levels of sustained participation across the population. There is a strong commitment to sport in the borough; however, current levels of participation are lower than the national and regional average and therefore key stakeholders in the borough need to work in partnership to ensure that 2012 legacy benefits are maximised, and that opportunities are provided and barriers removed, to encourage greater levels of sustained participation in sport.

Increasing activity would impact on many other conditions including mental health, cognitive function and physical functional. There are also major co-benefits on transport, built environment, global environment and CO2 emissions.

There is a growing awareness of the adverse effect of noise on our health and quality of life and we will identify and protect areas of tranquillity which have remained relatively undisturbed by noise and are prized for this reason<sup>10</sup>.

## **Objectives**

- 3.1 To promote a range of healthy walk programmes
- 3.2 To increase the provision and quality of children's play

<sup>10</sup> Draft National Planning Policy Framework (2011) - <http://www.communities.gov.uk/publications/planningandbuilding/draftframework>

- 3.3 To increase participation in sport and physical activity
- 3.4 To identify and protect quiet spaces and promote urban tranquillity

#### **Theme 4: To promote sustainable development**

Lewisham's challenge in the coming years will be to accommodate growth in the economy and population in a way that promotes our communities and protects our environment. By ensuring that all new developments are planned and developed in a sustainable manner we can help conserve energy, and protect the borough's unique biodiversity<sup>11</sup>.

The national guidance on maintaining the supply of open space is clear. PPS9 seeks to promote sustainable development by ensuring that biological and geological diversity are conserved, enhance and restored.

The Core Strategy recognises the need to take action to ensure that climate change is adapted and mitigated against. These actions include minimising the environmental impacts of development including water, noise and air pollution; the reduction of waste generation; supporting environmental protection and enhancement including establishing ecological networks.

The Council will also take action, together with its partners, to protect the borough from the risk of flooding and reduce the effects of flooding from all sources and manage improved water quality.

The Council will seek to raise awareness of the benefits of local food growing and urban agriculture. The Council is committed to encouraging the use redundant or unused open space in the borough for community food growing projects.

#### **Objectives**

- 4.1 To protect, conserve and enhance habitats and associated wildlife
- 4.2 To encourage a range of practices as a means of mitigating or ameliorating climate change
- 4.3 To raise awareness and quality of environmental education
- 4.4 To promote community gardening encourage sustainable food production

#### **Theme 5: To protect and enhance open space**

Good quality open space is set to become more valuable in the future as London continues to grow and prosper. The protection of our green space from inappropriate development is therefore paramount and developers need

<sup>11</sup> Core Strategy, page 109

to recognise their impact upon the environment and their responsibility to use scarce resources responsibly. PPG17 states that open space should not be built on or developed without a robust and up-to-date assessment proving that the land is surplus to requirements<sup>12</sup>. New developments should provide additional on-site provision and enhancements to accessibility and connectivity to and between open space.

Where developments are approved PPG17 sets out that the local authority should seek contributions through planning obligations to enhance and improve existing spaces.

The Lewisham Leisure and Open Space Study found that per 1,000 population, Lewisham has 1.41 ha of open space per person. With population growth, to maintain this level in 2026, there would need to be a requirement for an additional 63.55 ha of open space across the borough<sup>13</sup>.

The opportunities to create new open space are limited, due to development pressures and finite land available. The Core Strategy therefore emphasises protecting existing open space including allotment sites, and open spaces along river and railway corridors.

The London Plan seeks to protect and enhance open spaces, biodiversity and nature conservation, including the access to London's network of open spaces. Of particular importance is the maintenance and protection of Metropolitan Open Land (MOL) which is considered to have strategic importance for the whole of London.

The Core Strategy recognises the strategic importance of

the natural environment and sets out to protect the character, historic interest and amenity of, and within, open spaces, as well as the effects of development outside their boundaries<sup>14</sup>.

The LLOSS sets out the borough of Lewisham's Playing Pitch Strategy 2009-2025<sup>15</sup>. The strategy forecasts a deficiency in playing pitches, including 4.4 junior soccer pitches and 1.8 cricket pitches by 2025 and makes recommendations for additional pitches and improved changing facilities.

The London Plan promotes the retention of trees and where loss does occur the planting of additional trees is to be included in new developments.

## Objectives

- 5.1 To identify open space to be protected
- 5.2 To identify priority areas of deficiency and opportunities to address deficiency
- 5.3 To promote high quality management and maintenance of open space
- 5.4 To identify priority areas for improvement
- 5.5 To protect and improve outdoor sports facilities including playing fields
- 5.6 To develop and implement a borough tree strategy to protect and prevent loss of trees

<sup>12</sup> PPG 17 paragraph 10

<sup>13</sup> Lewisham Leisure and Open Space Study 2010 page 57, para 4.45

<sup>14</sup> Core Strategy Policy 12 page 108

<sup>15</sup> Appendix 3 Lewisham Leisure and Open Space Study

## **Theme 6: To promote a safe and secure environment**

Feeling safe is about more than crime and policing, its also about how an area looks and feels and how people treat each other. By working in partnership with the Safer Neighbourhood Teams and the local communities we can ensure that open space is free from crime and antisocial behaviour and provide a safe environment for all.

The issue of the perception of safety has been highlighted<sup>16</sup> as a concern by some members of the public and whilst only 5% stated that they did not feel safe when visiting parks and open spaces many people stated that the recent reduction in the park keeper service was of major concern.

The benefits of having a visible presence in parks is seen as one of the most successful ways of improving the perception of safety and security. The Council has increased the number of parks that have an on-site park keeper to 12 parks in 2010 and a number of other parks benefit from recent improvements such as on-site café concessions and staffed resources such as the Glendale's new offices at Manor Park.

### **Objectives**

- 6.1 To tackle antisocial behaviour and reduce fear of crime
- 6.2 To design out crime at the planning stage
- 6.3 To improve signage and way marking

<sup>16</sup> Parks survey 2011

## **Theme 7: To empower and support the local community**

Changes in the way we plan for the future are proposed giving people greater ownership over the plans and policies which affect their communities. We will work closely with neighbourhood and amenity groups to ensure that the protection and enhancement of open space is key to area neighbourhood plans.

We will continue to support the Lewisham's ward assemblies in their effort to improve their local environment and support local bids for ward funding to make environmental improvements.

Local people are increasingly seeking ways to become more active in the day to day running of their parks and open spaces. We will continue to offer opportunities to become more actively involved in hands-on projects through Nature's Gym sessions, becoming members of friends groups, and other volunteering projects.

Lewisham's communities are supported by the borough's vibrant voluntary sector which engages local people in a range of social, participative and cultural activities.

### **Objectives**

- 7.1 To increase the capacity of the local community to participate in local decision making and influence service delivery
- 7.2 To promote creative communities and their use of open space

- 7.3 Promote opportunities to volunteer and get actively involved in the delivery of local services

## RESOURCES

The need to make significant savings has impacted on the revenue budgets available for improvements to the boroughs parks and spaces. Therefore the 3 year implementation plan must be tempered by the knowledge that not all actions will be possible during this period and may remain as desired objectives. However the challenge for all involved with delivering quality open space will be to continue to seek and secure alternative funding during these difficult times. A key Green Scene target sets out to improve the support to community groups and to work more closely with, them in order to secure external funding

## GLOSSARY

ALGG	All London Green Grid	LSP	Local Strategic Partnership
CIL	Community Infrastructure Levy	MOL	Metropolitan Open Land
CSPAN	Community Sport and Physical Activity Network	MUGA	Multi Use Games Area
EA	Equalities Analysis	NPPF	National Planning Policy Framework
GIS	Geographic Information Systems	PCT	Primary Care Trust
GLA	Greater London Authority	POS	Public Open Space
GLDP	Greater London Development Plan	PPS	Planning Policy Statement
Ha	Hectares	RCIP	Ravensbourne Corridor Improvement Plan
LDF	Local Development Framework	SCS	Sustainable Community Strategy
LIP	Lewisham Implementation Plan	SNT	Safer Neighbourhood Team (Police)
LLOSS	Lewisham Leisure and Open Space Study	SPD	Supplementary Planning Document
LEU	London Ecology Unit	SPG	Supplementary Planning Guidance
LNRs	Local Nature Reserves	SUDS	Sustainable Drainage Systems
LPAC	London Planning Advisory Committee	UDP	Urban Development Plan
		UGS	Urban Green Space



# THREE YEAR IMPLEMENTATION PLAN 2012-14

ACTION PLAN						
KEY OBJECTIVE	1.1 To promote the highest standards of design and landscape management					
THEME	Urban Renaissance					
Action	Contribution to Sustainable Community Strategy	Ward	Outcome	Responsibility	Resource	
1	The Council seeks through the Lewisham Infrastructure Delivery Plan to promote high quality landscape design when developing parks and open spaces	Clean, green and liveable Safer Healthy, active and enjoyable	All	Number of projects delivered under the plan	Planning Green Scene Programme Management	Community Infrastructure levy/Section 106
2	The 2011 Lewisham Construction-related Consultancy Framework Agreement to include frame works for landscape architects practices and landscape architect-led multi disciplinary team	Clean, green and liveable Safer Healthy, active and enjoyable	All	Formal framework adopted by Mayor and Cabinet Contracts 2012	Programme Management Green Scene	Existing revenue budgets
3	The Council seeks to promote high quality landscape design when working with developers	Clean, green and liveable Safer Healthy, active and enjoyable	All	Number and quality of projects – number of external awards	Planning Green Scene Regeneration-Programme Management	Community Infrastructure levy/Section 106
4	The Council seeks to promote high quality public art through a best practice approach to commissioning as articulated in the borough's Public Art Strategy.	Clean, green and liveable Safer Healthy, active and enjoyable	All	Delivery of high quality public art projects as opportunities arise.	Community services – Arts Green Scene	Existing revenue budgets External grants

ACTION PLAN						
KEY OBJECTIVE	1.2 To create an accessible network of open space improving linkages and connections					
THEME	Urban Renaissance					
Action	Contribution to Sustainable Community Strategy	Ward	Outcome	Responsibility	Resource	
5	To work with neighbouring boroughs to develop the All London Green Grid of interlinking green spaces and networks	Clean, green and liveable:  Safer:  Healthy, active and enjoyable:	All	Adoption of ALGG	Green Scene Planning	Existing revenue budgets
6	The Council will continue to update and develop the North Lewisham Links Strategy and Legible Lewisham in order to create an accessible network of important green spaces in the north of the borough (Lewisham Town Centre Action Plan)	Clean, green and liveable:  Safer:  Healthy, active and enjoyable:	New Cross Pepys	2012 Update of the links strategy by external consultants	Programme Management	Existing revenue budgets
7	The Council will establish the Waterlink Way as a key accessible linear route through the spine of the borough	Clean, green and liveable:  Safer:  Healthy, active and enjoyable:	New Cross Brockley Lewisham Central Ladywell Rushey Green Catford South Bellingham Downham	Number of maps distributed  Number of new signs and information boards erected along the route	Green Scene Programme Management	Existing revenue budgets
8	The Council to work with the Green Chain Walk officer to create extension s from Eltham to Greenwich via Blackheath and from Sydenham north through Southwark	Clean, green and liveable:  Safer:  Healthy, active and enjoyable:	Blackheath Sydenham Forest Hill Telegraph Hill	Number of New way markers erected  Increased number of walkers on route	Green Scene Planning	Existing revenue budgets
9	The Council will open up access to Manor Park with a new third entrance to Longhurst Road	Clean, green and liveable:  Safer:  Healthy, active and enjoyable:	Lee Green	Completion of the new entrance and bridge 2012  Increased number of park users  Regain Green Flag award	Green Scene Programme Management	Capital Budget secured 2012

ACTION PLAN						
KEY OBJECTIVE	1.3 To promote quality open space through third-party endorsement					
THEME	Urban Renaissance					
Action		Contribution to Sustainable Community Strategy	Ward	Outcome	Responsibility	Resource
10	The Council will continue to test the quality of parks and open spaces through entering externally judged Green Flag Award and Community Green Flag award.	Clean, green and liveable:  Safer:  Healthy, active and enjoyable	All	Number of Green Flag/ Community Green Flag awards (target 15 for 2015)	Green Scene	Existing revenue budgets
11	The Council will continue to promote both the annual Lewisham in Bloom competition and the Allotments competition	Clean, green and liveable:  Healthy, active and enjoyable	All	Number of entries for Lewisham in Bloom Number of categories for Lewisham in Bloom Attendance at the Lewisham in Bloom awards ceremony  Number of entries for Allotments competition Number of categories for Allotment competition Attendance at the Allotments awards ceremony	Green Scene	Existing revenue budgets
12	The Council will continue to test the quality and performance of parks through entering externally judged competitions and quality recognitions	Clean, green and liveable:  Safer:  Healthy, active and enjoyable	All	Number of industry awarded projects	Programme Management Parks	Existing revenue budgets

ACTION PLAN						
KEY OBJECTIVE	2.1 To strengthen community use of open space and promote greater social inclusion					
THEME	Social inclusion and community cohesion					
Action	Contribution to Sustainable Community Strategy	Ward	Outcome	Responsibility	Resource	
13	Continue to develop and support Friends groups for key parks and recreation grounds to increase local involvement and ownership	Empowered and responsible	All	Number of active Friends Groups Attendance at Annual parks conference Amount of funding secured by the friends groups. Amount of funding secured from a wider pool of sources, including funding for arts projects	Green Scene Sport and Recreation Programme Management Arts	Existing revenue budgets
14	The Council will continue to encourage use of redundant space as Community Gardens as initiated by the Capital Growth scheme or similar vehicle.	Empowered and responsible  Green, Clean and liveable  Healthy, active and enjoyable	All	Increased number of registered Community gardens (target 60 for end 2012)  80 by end of 2013	Green Scene Planning	Section 106 agreements
15	The Council will facilitate, where appropriate, community and commercial leases for parks buildings no longer in use	Empowered and responsible  Dynamic and prosperous	All	Number of leases for Council owned buildings and facilities granted in order to bring life back into them	Green Scene Planning Valuation	Leaseholder funded

ACTION PLAN						
KEY OBJECTIVE	2.2 To encourage usage of open space by young and old alike					
THEME	Social inclusion and community cohesion					
Action	Contribution to Sustainable Community Strategy	Ward	Outcome	Responsibility	Resource	
16	The Council to work with the community and the local assemblies to make improvements to children's play facilities	Healthy, active and enjoyable	All	Number of new facilities User satisfaction rates Increased usage of facilities	Green Scene Children and Young people	Seek external grants
17	The Council to work with the bowls clubs to help them to develop a sustainable membership and to attract a broader membership	Healthy, active and enjoyable	Ladywell Rushey Green Perry Vale	Increased number of members Increased number of young members Increased number of non-members	Sport and Recreation Green Scene	Existing revenue budgets
18	Increase the number of sports and other activities available in our parks and open spaces	Healthy, active and enjoyable	All	Increased number of pitch sports including cricket Increased number of fitness training sessions	Sport and Recreation Green Scene External partners	Capital grants Existing revenue budgets
19	Actively engage young & old through the 'Rivers & People' engagement project	Healthy, active and enjoyable	All	Engage 3600 individuals under 18 & over 60 years old by end 2013	Green Scene	External grant

ACTION PLAN						
KEY OBJECTIVE		2.3 To undertake equalities analysis' across the green sector				
THEME		Social inclusion and community cohesion				
Action		Contribution to Sustainable Community Strategy	Ward	Outcome	Responsibility	Resource
20	Continue to improve access to parks and open spaces to meet the needs of disabled people and continue working with the Lewisham Access Group to identify what is required	Clean, green and liveable	All	Number of accessible parks Number of accessible toilet facilities Number of playgrounds with facilities for children with a disability	Green Scene Sport and Recreation	Existing revenue budgets
21	Marketing and promotion to stimulate attendance and usage by all sections of the community	Clean, green and liveable	All	Number of marketing initiatives	Green Scene	Existing revenue budgets
22	Identify and develop circular routes for people with disabilities to enjoy	Clean, green and liveable	All	Number of accessible Walks	Green scene Sport and Recreation	Existing revenue budgets
23	Establish capacity building support via Community Gardens Forum to enable vulnerable/disadvantaged groups to access the community garden scheme	Empowered and responsible	All	Establishment of forum to enable this to happen by end of 2012	Green scene	Existing revenue budgets

ACTION PLAN						
KEY OBJECTIVE		2.4 To implement a parks events policy and to animate open space through events, arts and activities				
THEME		Social inclusion and community cohesion				
	Action	Contribution to Sustainable Community Strategy	Ward	Outcome	Responsibility	Resource
24	Formal policy for events bookings in parks to be completed in order that the events process is clear and transparent	Healthy, active and enjoyable	All	Report to Mayor and Cabinet re events booking strategy for parks (November 2011)	Green Scene	Existing revenue budgets
25	Formal joint policy with LB Greenwich for events bookings for Blackheath to be completed in order that the events process is clear and transparent	Healthy, active and enjoyable	Blackheath	Report to Mayor and Cabinet re specific events strategy for Blackheath (November 2011)	Green Scene Greenwich Council	Existing revenue budgets
26	To develop a marketing plan for parks and open spaces to animate our open spaces	Healthy, active and enjoyable	All	Draft plan to be completed in partnership with Glendale Grounds Management by June 2012	Green Scene	Existing revenue budgets
27	To utilise electronic forms of correspondence/articles with the public such as blogs, twitter and web sites	Healthy, active and enjoyable	All	Number of interactive blogs Number of web site visits	Green Scene Communications	Existing revenue budgets

	<b>ACTION PLAN</b>					
	<b>KEY OBJECTIVE</b>	3.1 To promote a range of healthy walk programmes				
	<b>THEME</b>	Promote healthy lifestyles and well-being				
	<b>Action</b>	<b>Contribution to Sustainable Community Strategy</b>	<b>Ward</b>	<b>Outcome</b>	<b>Responsibility</b>	<b>Resource</b>
28	Walk4Life is a national initiative to create accessible one mile walks in parks and open spaces <a href="http://www.walk4life.info/walk/ladywell-fields">http://www.walk4life.info/walk/ladywell-fields</a> <a href="http://www.wfh.naturalengland.org.uk/walkfinder/london/lewisham-healthy-walks">http://www.wfh.naturalengland.org.uk/walkfinder/london/lewisham-healthy-walks</a>	Healthy, active and enjoyable	All	Number of walks	Green Scene NHS Lewisham	Existing revenue budgets External Walk4Life
29	Continue to support the Lewisham Healthy walk Programmes <a href="http://www.wfh.naturalengland.org.uk/walkfinder">www.wfh.naturalengland.org.uk/walkfinder</a>	Healthy, active and enjoyable	All	Number of walks	Parks NHS – Community Health	Existing revenue budgets
30	Council will continue to improve and promote linkages between the green spaces in the North Lewisham area	Healthy, active and enjoyable	New Cross Pepys	Length in meters of accessible walks	Regeneration & Resources Green Scene	Existing revenue budgets External grant applications



	<b>ACTION PLAN</b>					
	<b>KEY OBJECTIVE</b>	3.2 To increase the provision and quality of children's play				
	<b>THEME</b>	Promote healthy lifestyles and well-being				
	<b>Action</b>	<b>Contribution to Sustainable Community Strategy</b>	<b>Ward</b>	<b>Outcome</b>	<b>Responsibility</b>	<b>Resource</b>
31	The Council to work with the community and the local assemblies to make improvements to children's play facilities	Healthy, active and enjoyable	All	Number of new facilities User satisfaction rates Increased usage of facilities	Green Scene Local assembly coordinator Children and Young people	Seek external grants Local assembly grants
32	Where possible introduce equipment specifically for children with a mobility disability.	Healthy, active and enjoyable	All	Audit of equipment suitable for children with a disability	Green Scene Programme Management Children and Young people	Seek external grants

ACTION PLAN						
KEY OBJECTIVE	3.3 To increase participation in sport and physical activity					
THEME	Promote healthy lifestyles and well-being					
Action	Contribution to Sustainable Community Strategy	Ward	Outcome	Responsibility	Resource	
33	The Council's parks contractor Glendale to work with the Council's Sports & Recreation Services and take note of the existing council sports plans to improve the sports and physical activity offer in parks	Healthy, active and enjoyable	All	Number of activity days Number of schools using parks Delivery of outcomes in sports plans per year  Number of football matches played Number of sponsored walks and runs	Green Scene Sport and Recreation	Existing revenue budgets
34	The increase the number of outdoor gym's following the success of the gym at Home Park	Healthy, active and enjoyable	All	Number of new facilities	Green Scene Sport and Recreation Friends groups	External capital grants
35	To increase the number and quality of the Holiday programmes schemes	Healthy, active and enjoyable	All	Quality of holiday programme days via customer surveys	Green Scene Sport and Recreation	Existing capital grants Locality funding External grants
36	The ParkSport project is designed to bring competitive cricket back to 2 of the boroughs public parks	Healthy, active and enjoyable	Ladywell Perry Vale	Number of cricket matches Number of users/clubs Number of schools use	Green Scene Sport and Recreation	External capital grants External revenue grant Existing revenue budgets
37	Develop a wide range of regular healthy outdoor physical activity opportunities for all ages	Healthy, active and enjoyable	All	% of people over 50 engaged in regular activities Perception of increased levels of fitness by users through annual survey	Sport and Recreation Green Scene	Existing revenue budgets
38	Maintain and support active volunteering through Natures Gym initiative; 3RiversCleanUp festival and bespoke events for organisations and groups	Healthy, active and enjoyable	All	Number of Natures Gym events [+40 p/a] Number of river clean up events [25 p/a] Number of bespoke events [10 p/a]	Green Scene	Existing revenue budgets

ACTION PLAN						
KEY OBJECTIVE	3.4 To identify and protect quiet spaces and promote urban tranquillity					
THEME	Promote healthy lifestyles and well-being					
Action	Contribution to Sustainable Community Strategy	Ward	Outcome	Responsibility	Resource	
39	The Council will Identify areas of tranquillity which have remained relatively undistributed by noise and are prized for their recreational and amenity value for this reason. Draft National Planning Policy Framework (2011) - <a href="http://www.communities.gov.uk/publications/planningandbuilding/draftframework">http://www.communities.gov.uk/publications/planningandbuilding/draftframework</a>	Healthy, active and enjoyable	All	Number of areas of tranquillity identified	Planning Environmental Health Green Scene	Existing revenue budgets External grants
40	The Council will protect Quiet Areas, to be formally identified under Environmental Noise (England) Regulations 2006 (as amended) and consider protection of spaces of relative tranquillity or high soundscape quality, particularly through borough open space strategies." The new London Plan (2011), <a href="http://www.london.gov.uk/priorities/planning/londonplan">http://www.london.gov.uk/priorities/planning/londonplan</a> , on page 231	Healthy, active and enjoyable	All	Number of areas protected	Green Scene Planning Environmental Health	Existing revenue budgets External grants

ACTION PLAN						
KEY OBJECTIVE	4.1 To protect, conserve and enhance habitats and associated wildlife					
THEME	Promote sustainable development					
Action	Contribution to Sustainable Community Strategy	Ward	Outcome	Responsibility	Resource	
41	The Council will continue to report on NI 197; Improved local biodiversity	Clean, Green and liveable	All	Annually measure and report the proportion of local sites where positive conservation management has been or is being implemented. [Achieve 59%]	Green Scene	Existing revenue budgets
42	Continue to report biodiversity actions via the UK's Biodiversity Action Plan reporting system [BARS]	Clean, Green and liveable	All	BARS contains all the Lewisham Biodiversity Partnerships' Action Plans and monitors progress towards multiple targets. Most targets are due for completion by 2015	Green Scene	Existing revenue budgets
43	Monitor various wildlife habitats in parks on a regular basis and ensure adequate management is being taken through Nature's gym sessions and Glendale staff.	Clean, Green and liveable	All	Number of habitats such as stag beetle loggeries, ponds, wildlife hedges, bird and bat boxes Number of Bird Champions	Green Scene	Existing revenue budgets
44	Nature's Gym is a successful project which has an annual programme of work days that members of the public can attend. Work days include practical conservation work to protect, conserve and enhance various habitats and wildlife in parks and nature reserves.	Healthy, active and enjoyable  Clean, green and enjoyable	All	Number of Nature Gym sessions Number of volunteers	Green Scene	Existing revenue budgets
45	Froglife to engage with allotment holders to establish need for workshops on improving plots for wildlife, funded by Heritage Lottery fund	Clean, Green and liveable	All	With sufficient interest, development and carrying out of courses by end of 2012	Green Scene	Existing revenue budgets

ACTION PLAN						
KEY OBJECTIVE	4.2 To encourage a range of practices as a means of mitigating or ameliorating climate change					
THEME	Promote sustainable development					
Action	Contribution to Sustainable Community Strategy	Ward	Outcome	Responsibility	Resource	
46	Explore modifying park grounds maintenance where appropriate to encourage a greater area of grassland to be managed as flower rich meadow.	Clean, Green and liveable	All	Reduce area of intensively managed amenity grass land. Increased biodiversity and species mobility  Area of grasslands managed as meadow (SQM)	Green Scene	Existing revenue budgets
47	Encourage tree and hedge planting in various parks and open spaces as a means to combat climate change	Clean, Green and liveable	All	Number of trees in parks Number of new hedgerows planted	Green Scene	Existing revenue budgets External grants
48	Explore potential for appropriate park buildings to be retrofitted with living roofs and walls	Clean, Green and liveable	All	Number of buildings identified and retro-fitted	Green Scene	External grants
49	Work with the Environment Agency and partner organisations to deliver the Water Framework Directive that seeks to reduce flood risk and achieve 'Good ecological Potential' for all Lewisham rivers by 2027	Clean, Green and liveable	All	Achieve Good potential for the River Pool.  Specifically complete: in-channel habitat works to Ravensbourne south of Catford and on the Rver Pool.  Construct a new confluence weir by pass for fish passage on the Pool/Ravensbourne confluence Aid fish passage by notching the Bell Green weir	Environment Agency Programme Management Planning Green Scene	External capital grants

ACTION PLAN						
KEY OBJECTIVE	4.3 To raise awareness and quality of environmental education					
THEME	Promote sustainable development					
Action	Contribution to Sustainable Community Strategy	Ward	Outcome	Responsibility	Resource	
50	Outreach local schools, youth groups and nurseries in using the parks as an educational resource, for a multitude of environmental and conservation subjects.	Clean, Green and liveable	All	Number of classes in the parks Number of primary and secondary schools involved.	Green Scene	Existing Revenue budgets
51	Furnish Manor Park classroom and make it available for local schools and groups to use as an educational resource	Clean, Green and liveable	Lee Green	Number of local schools using building Number of classroom sessions Number of users	Green Scene	Locality Funding Existing revenue budgets
52	Continue to promote and deliver Rivers and People engagement project	Clean, Green and liveable	All	Positively engage 5710 individuals to raise awareness and promote Lewisham's rivers as a environmental and educational resource	Green Scene	External grant
53	Continue with the themes of food growing in the Clean and Green Schools Programme and encourage greater participation in this category	Clean, Green and liveable	All	Number of new gardens established	Green Scene	Existing revenue budgets

ACTION PLAN						
KEY OBJECTIVE	4.4 promote community gardening & encourage sustainable food production					
THEME	Promote sustainable development					
Action	Contribution to Sustainable Community Strategy	Ward	Outcome	Responsibility	Resource	
54	Review to expand on the online Community Garden forum to establish the need for group meetings for current, new and interested CG parties to promote and offer support	Clean, Green and liveable  Empowered and responsible	All	Establish need and set up meeting group as required by end of 2012	Green Scene	Existing revenue budgets
55	Increase in current number of entrants for Community Garden category in the Lewisham In Bloom campaign	Clean, Green and liveable  Healthy, active and enjoyable	All	Increase in number in 2012 to 20 entries	Green Scene	Existing revenue budgets
56	Promote community gardening and planting of orchards	Clean, Green and liveable  Empowered and responsible	All	Number of planting events Number of community gardens	Green Scene	Existing revenue budgets
57	Increase links between community garden groups and arts groups	Clean, Green and liveable  Empowered and responsible	All	Number of links	Green Scene Community services - Arts	Existing revenue budgets
58	Create allotments handout/booklet including information on sustainable food production (and consideration of wildlife on allotments)	Clean, Green and liveable  Empowered and responsible	All	Number of booklets produced and distributed by end of 2013	Green Scene	Existing revenue budgets External grants

ACTION PLAN						
KEY OBJECTIVE	5.1 To identify open space to be protected					
THEME	Protect and enhance open space					
	Action	Contribution to Sustainable Community Strategy	Ward	Outcome	Responsibility	Resource
59	The Council will continue to resist inappropriate development on areas of Public Open Space (POS) and Urban Green Space (UGS)	Clean, Green and liveable	All	Amount of public open space protected from inappropriate development	Planning Green Scene	Existing revenue budgets Section 106 agreements/ CIL
60	The Council will resist inappropriate development on natural and semi natural land as identified in the LLOSS	Clean, Green and liveable	All	Amount of natural and semi natural space protected from inappropriate development	Planning Green Scene	Existing revenue budgets Section 106 agreements/ CIL
61	The Council will continue to give special consideration to developments within the declared World Heritage Site Buffer Zone (Blackheath). New developments on land within the buffer zone will be required to have no adverse visual impact on, and enhance the World Heritage site.	Clean, Green and liveable	Blackheath	Number of new developments	Planning Green Scene	Existing revenue budgets Section 106 agreements/ CIL
62	Continue to protect through the Planning Policy Metropolitan Open Land, Green Chains, River Corridors and sites identified by the London Ecology Unit e.g. Metropolitan, Borough or Local Nature Conservations importance.	Clean, Green and liveable	All	Amounts of space protected (Sqm)	Planning Green Scene	Existing revenue budgets Section 106 agreements/ CIL



ACTION PLAN						
KEY OBJECTIVE	5.2 To identify priority areas of deficiency and opportunities to address deficiency					
THEME	Protect and enhance open space					
Action	Contribution to Sustainable Community Strategy	Ward	Outcome	Responsibility	Resource	
63	In areas identified as being deficient in Public Open Space(POS) the Council will concentrate its efforts to enhance public access and quality to existing open space, and negotiate with developers for new green space provision	Clean, Green and liveable	All	Enhanced Quality scores for parks and open spaces in areas of deficiency (2013)	Green Scene Planning Programme Management	External funding
64	Where appropriate aim to increase the amount of public open space particularly in the deficient north of the borough	Clean, Green and liveable	New Cross Pepys	Area of new POS created	Planning Programme Management	Section 106/CIL
65	In areas identified as being deficient in 'Access to Nature' seek to enhance habitats in nearby parks and open spaces that increase individuals opportunity to experience and enjoy the natural environment/wildlife.	Clean, Green and liveable	All	Reduce area of deficiency by achieving a Borough grade designation for Bridgehouse meadows post ELLE capital project	Green Scene Planning Programme Management	External Funding

ACTION PLAN						
KEY OBJECTIVE	5.3 To promote high quality management & maintenance of open space					
THEME	Protect and enhance open space					
Action	Contribution to Sustainable Community Strategy	Ward	Outcome	Responsibility	Resource	
66	To continue to monitor the effectiveness of the Glendale Green Space Contract awarded in March 2010	Clean, Green and liveable	All	Monitor the level of monthly contract defaults for Parks  Monitor the level of monthly contract defaults for Lewisham Homes Housing Sites  Introduction of new electronic mapping and monitoring system for the Green Space Contract	Green Scene	Existing revenue budgets
67	To encourage the policy of apprenticeships and staff training with contractor Glendale	Clean, Green and liveable	All	Number of trainees/apprentices Number of training hours	Green Scene	Existing revenue budgets
68	To agree and enter into a viable and sustainable contractual arrangement for the management and maintenance of Beckenham Place golf course and parkland	Clean, Green and liveable	Bellingham Downham	Transfer of management of the golf course and cafe to an external partner organisation	Green Scene	Existing revenue budgets
69	Continue to develop and improve Parks management Plans and extend the practice of management planning to a greater range of parks and open spaces	Clean, Green and liveable	All	Number of parks management plan	Green Scene	Existing revenue budgets
70	To successfully incorporate the management of the Cemetery and Crematorium grounds into the Green Scene portfolio	Clean, Green and liveable	All	New management arrangements to be put in place 2012	Green Scene	Existing revenue budgets

71	The Lewisham Leisure and Open Spaces Study has identified through audit a quality score for parks (appendix B) and the Council should aim at providing a minimum of "good" standard sites rather than "average" or "poor".	Clean, Green and liveable	New Cross Sydenham Downham	To make improvements to parks assessed as being "average" in the quality audit	Green Scene	Existing revenue budgets Locality Funds
72	The Lewisham Leisure and Open Spaces Study has identified through audit a quality score for natural and Semi natural sites and the Council should aim at providing a minimum of "good" standard sites rather than "average" or "poor".	Clean, Green and liveable	Evelyn; Downham; Crofton; New Cross; Ladywell; ForestHill; Blackheath & Bellingham	Achieve a 'Good' quality rating using LLOSS criteria	Green Scene	Existing revenue budgets Locality Funds

ACTION PLAN						
KEY OBJECTIVE	5.4 To identify priority areas for improvement					
THEME	Protect and enhance open space					
Action	Contribution to Sustainable Community Strategy	Ward	Outcome	Responsibility	Resource	
73	Footpaths in a number of parks still require significant capital investment over the coming years.	Clean, Green and liveable	All	Amount of internal and external investment secured  Linear meters of new and resurfaced footpaths	Green Scene	External Grants
74	The provision of signage, bins and seating (where appropriate) are seen as key to improving the quality of current provision in parks, allotments and nature reserves	Clean, Green and liveable	All	Number of addition bins installed annual  Number of additional seats installed annual  Number of additional signs installed annual	Green Scene	External Grants
75	The Community Infrastructure Levy (CIL) is a new tariff that local councils are empowered to levy on new development, charged in pounds per square metre of net new development. Funds raised will be used to provide local infrastructure, such as schools, hospitals, roads and transport schemes, as well as libraries, parks and leisure centres	Clean, Green and liveable	All	Identify parks and open spaces projects for 2014 onwards	Green Scene Planning Programme Management	CIL
76	The Council will work with the Environment Agency in order to meet the requirements set out in the Water Framework Directive where we are required to ensure that all our Rivers meet a certain standard in terms of cleanness	Clean, Green and liveable	All (adjacent to rivers)	Length of river corridor improved (meters) and protected Cleanliness of the Ravensbourne, Pool and Quaggy rivers to achieve 'Good ecological potential' by 2027 Improved water quality levels to the three rivers	Green Scene Planning EA Programme Management	External Funding Section 106/CIL Environment Agency
77	The Council will work with partners with a view to meeting the aspirations set out in the Ravensbourne Corridor Improvement Plan	Clean, Green and liveable Safer		Length of river corridor made more accessible to the public	Programme Management Green Scene	External Funding Section 106/CIL Environment Agency

78	Continue the development of parks and open spaces included in the North Lewisham Links strategy including Deptford Park and Folkestone Gardens	Clean, Green and liveable Safer		Level of improvement at Deptford Park Level of improvement at Folkestone Gardens	Programme Management Green Scene	External Funding Section 106/CIL
79	Continue to improve the quality of infrastructure across Blackheath working to the improvement strategy "Blackheath the next 50 years" including footpath, street lighting, seating and bins, signage and the heath/highway boundary treatments	Clean, Green and liveable	Blackheath	Level of funding secured Improvements made	Programme Management Green Scene	External Funding Section 106/CIL

ACTION PLAN						
KEY OBJECTIVE	5.5 To protect and improve outdoor sports facilities including playing fields					
THEME	Protect and enhance open space					
Action	Contribution to Sustainable Community Strategy	Ward	Outcome	Responsibility	Resource	
80	Seek to meet the recommendations set out in the LLOSS with regards to outdoor sports facilities as set out in the Playing fields strategy 2009-2025	Healthy, active and enjoyable	All	Number of pitch sport available Number of MUGA's Number of tennis courts	Green Scene Sport and Recreation Private operators	Existing Revenue budgets
81	The Council will seek to meet the recommendation of the playing pitch strategy to build new changing facilities at Blackheath, Beckenham Place Park (Old Bromley Road) and Firhill	Healthy, active and enjoyable	Blackheath Downham Bellingahm	Number of new changing rooms	Green Scene Sport and Recreation Private operators	External funding required Section 106/CIL
82	Continue to work in partnership with the ECB to develop the ParkSport project to re-introduce cricket to Hilly Fields and Mayow Park	Healthy, active and enjoyable	Ladywell Perry vale	Listed earlier	Green Scene Sport and Recreation	External funding secured
83	Work with the community to develop lease agreements to transfer responsibilities to the community in order to return redundant assets to public use	Empowered and responsible	All	Number of expressions of interest Number of facilities managed by the community	Sport and Recreation Planning Valuation	Existing revenue budgets

	<b>ACTION PLAN</b>					
	<b>KEY OBJECTIVE</b>	5.6 To develop and implement a borough tree strategy to protect and prevent loss of trees				
	<b>THEME</b>	Protect and enhance open space				
	<b>Action</b>	<b>Contribution to Sustainable Community Strategy</b>	<b>Ward</b>	<b>Outcome</b>	<b>Responsibility</b>	<b>Resource</b>
84	To re survey all street trees, and trees on parks and open spaces by 2016	Clean, green and liveable	All	Resurvey all street trees in 2013/14 and complete the mapping of all parks trees by 2015/16	Green Scene Planning	Existing revenue budgets Health and Safety and Risk
85	To formally adopt the tree Strategy for Lewisham	Clean, green and liveable	All	Formal adoption in 2012/13	Green Scene Planning	Existing revenue budgets

ACTION PLAN						
KEY OBJECTIVE	6.1 To tackle antisocial behaviour and reduce fear of crime					
THEME	Promote a safe and secure environment					
Action	Contribution to Sustainable Community Strategy	Ward	Outcome	Responsibility	Resource	
86	To reduce the fear of crime in parks and open spaces by increasing the visible presence of staff and operatives in public parks	Safer	All	Retain the number of park keepers in parks  Encourage additional café concessions in parks  Retain the number of on-site gardening staff  Increase visits by the Safer neighbourhood Teams	Green Scene Glendale	Within existing revenue budgets  External funding
87	Glendale's Park Security team to work with the SNT to enforce the Dog Control orders and the parks byelaws	Safer	All	Increase number of staff trained in the enforcement of DCO's  Number of Fixed penalty Notices given	Green Scene Glendale SNT	Within existing revenue budgets
88	Update Council bylaws for parks	Safer	All	Report to Full council and Home Office for parks in general and joint set for Blackheath (with LB Greenwich) 2014	Legal Green Scene	Within existing revenue budgets



	<b>ACTION PLAN</b>					
	<b>KEY OBJECTIVE</b>	6.2 To design out crime at the planning stage				
	<b>THEME</b>	Promote a safe and secure environment				
	<b>Action</b>	<b>Contribution to Sustainable Community Strategy</b>	<b>Ward</b>	<b>Outcome</b>	<b>Responsibility</b>	<b>Resource</b>
89	To ensure that all new landscaping projects carefully consider the need to design crime out in the planning stage	Safer  Clean, green and liveable	All	Number of new and improved parks	Programme Management Green Scene Planning	External Funding Section 106/CIL
90	Ensure that all new projects take account of the interactive toolkit developed as part of the QUERCUS project	Safer  Clean, green and liveable	All	Reduce incidents of anti social behaviour in parks  Reduce incidents of vandalism by installing robust pieces of equipment  Safer parks Awards	Programme Management Green Scene Planning	External Funding Section 106/CIL

	<b>ACTION PLAN</b>					
	<b>KEY OBJECTIVE</b>	6.3 To improve signage and way marking				
	<b>THEME</b>	Promote a safe and secure environment				
	<b>Action</b>	<b>Contribution to Sustainable Community Strategy</b>	<b>Ward</b>	<b>Outcome</b>	<b>Responsibility</b>	<b>Resource</b>
91	To signpost the Waterlink Way and provide plans and maps of the route	Safer  Clean, green and liveable	All	Number of new signs and information boards erected along the route	Programme Management Green scene Planning	External capital funding
92	Improve the quality and quantity of signage in 'average' scoring parks to lift them up to a good standard	Safer  Clean, green and liveable		Number of new sign boards	Green Scene	Existing revenue budgets
93	To work with Greenwich Council to deliver the Green Chain Walk extension signage for Blackheath	Safer  Clean, green and liveable	Blackheath	Formal adoption of the extension	Greenwich Council Green Scene	Green Chain Budget

ACTION PLAN						
KEY OBJECTIVE	7.1 To increase the capacity of the local community to participate in local decision making and influence service delivery					
THEME	Empower and support the local community					
Action	Contribution to Sustainable Community Strategy	Ward	Outcome	Responsibility	Resource	
94	To work with area groups to ensure that the protection and enhancement of open space is central to local neighbourhood plans	Empowered and responsible	All	Number of Neighbourhood Plans 2012	Amenity groups Green Scene Planning	Existing revenue budgets
95	To work closely with the Ward Assembly's with regards to their aspirations for the environment in their local area	Empowered and responsible	All	Number of environmental projects funded and completed in parks and open spaces	Assembly coordinators Green Scene	Local ward assemblies
96	Continue to develop and support Friends groups for key parks and open spaces to increase local involvement and ownership	Empowered and responsible	All	Number of active Friends Groups  Attendance at Annual parks conference  Amount of funding secured by the friends group	Green Scene	Existing revenue budgets
97	Review to expand on the online Community Garden forum to establish the need for group meetings for current, new and interested CG parties to promote and offer support	Clean, Green and liveable  Empowered and responsible	All	Establish need and set up meeting group as required by end of 2012	Green Scene	Existing revenue budgets
98	Work with community groups to Maintain and where possible increase the number of Community Green Flag awards	Clean, green and liveable: Safer: Healthy, active and enjoyable	Forest Hill Perry Vale Grove Park Telegraph Hill	Achieve 5 by 2015	Green Scene	Existing revenue budgets
99	Ensure all self-managed sites have a signed management agreement to encourage effective management of underused/neglected plots	Empowered and responsible	All	Number of sites with management agreement	Green Scene	Existing revenue budgets

	<b>ACTION PLAN</b>					
	<b>KEY OBJECTIVE</b>	7.2 To promote creative communities and their use of open space				
	<b>THEME</b>	Empower and support the local community				
	<b>Action</b>	<b>Contribution to Sustainable Community Strategy</b>	<b>Ward</b>	<b>Outcome</b>	<b>Responsibility</b>	<b>Resource</b>
100	To encourage the use of parks by artists and creative organisations for example Secret garden project 2013 <a href="http://www.upprojects.com/secretgarden">http://www.upprojects.com/secretgarden</a>	Dynamic and prosperous	All	Number of arts projects  Number of art installations in parks and open spaces	Arts Green Scene	Existing Council budgets External funding
101	To increase the number and variety of events held in our parks and open spaces	Dynamic and prosperous	All	Number of events held  Increase variety of events held	Green Scene Corporate Events	Existing Council budgets External funding
102	To increase the opportunity to hold fitness classes and other forms of active recreation in parks and open spaces	Healthy, active and enjoyable	All	Number of fitness classes  Number of healthy walk programmes	Green scene External providers	Contractual budgets

ACTION PLAN						
KEY OBJECTIVE	7.3 Promote opportunities to volunteer and get actively involved in the delivery of local services					
THEME	Empower and support the local community					
Action	Contribution to Sustainable Community Strategy	Ward	Outcome	Responsibility	Resource	
103	To work closely with the Friends Groups to facilitate active involvement with the maintenance of parks and open space	Empowered and responsible  Healthy, active and enjoyable	All	Number of projects established	Green Scene	Existing revenue budgets
104	Nature's Gym is a successful project which has an annual programme of work days that members of the public can attend.	Healthy, active and enjoyable  Clean, green and enjoyable	All	Maintain current delivery and design extra bespoke sessions where appropriate/feasible	Green Scene	Existing revenue budgets
105	Work with Voluntary Action Lewisham and Lewisham Community Garden Forum to engage/ advertise for volunteers for community gardens	Empowered and responsible  Healthy, active and enjoyable  Clean, green and enjoyable	All	Setting up of scheme	Green Scene	Existing revenue budgets
106	Be the lead partner and facilitate and promote the 3RiversCleanUP festival. A multi-borough, multi-partnership initiative to carry out ecological management over a river catchment with volunteers.	Healthy, active and enjoyable	All	Number of events delivered  Mx3 of Himalayan Balsam removed  No of Giant Hogweed treated  Mx3 bags of rubbish collected	Green Scene	External funding

# Measuring progress

How can the Council and its partners know if they have been successful in realising the vision and delivering the aims outlined in this strategy?

The strategy will be accompanied by 2 three-year Implementation Plans. At the end of each three year period the plan will be updated to show progress. Key action points will also be monitored as part of the annual Environment Service Planning process.

# Further Information

## Appendix A

### Lewisham Leisure & Open Space Study 2010

Study

Maps

Appendices

Link to Lewisham council web site

<http://www.lewisham.gov.uk/myservices/planning/policy/LDF/evidence-base/Pages/LDF-evidence-base-environment.aspx>

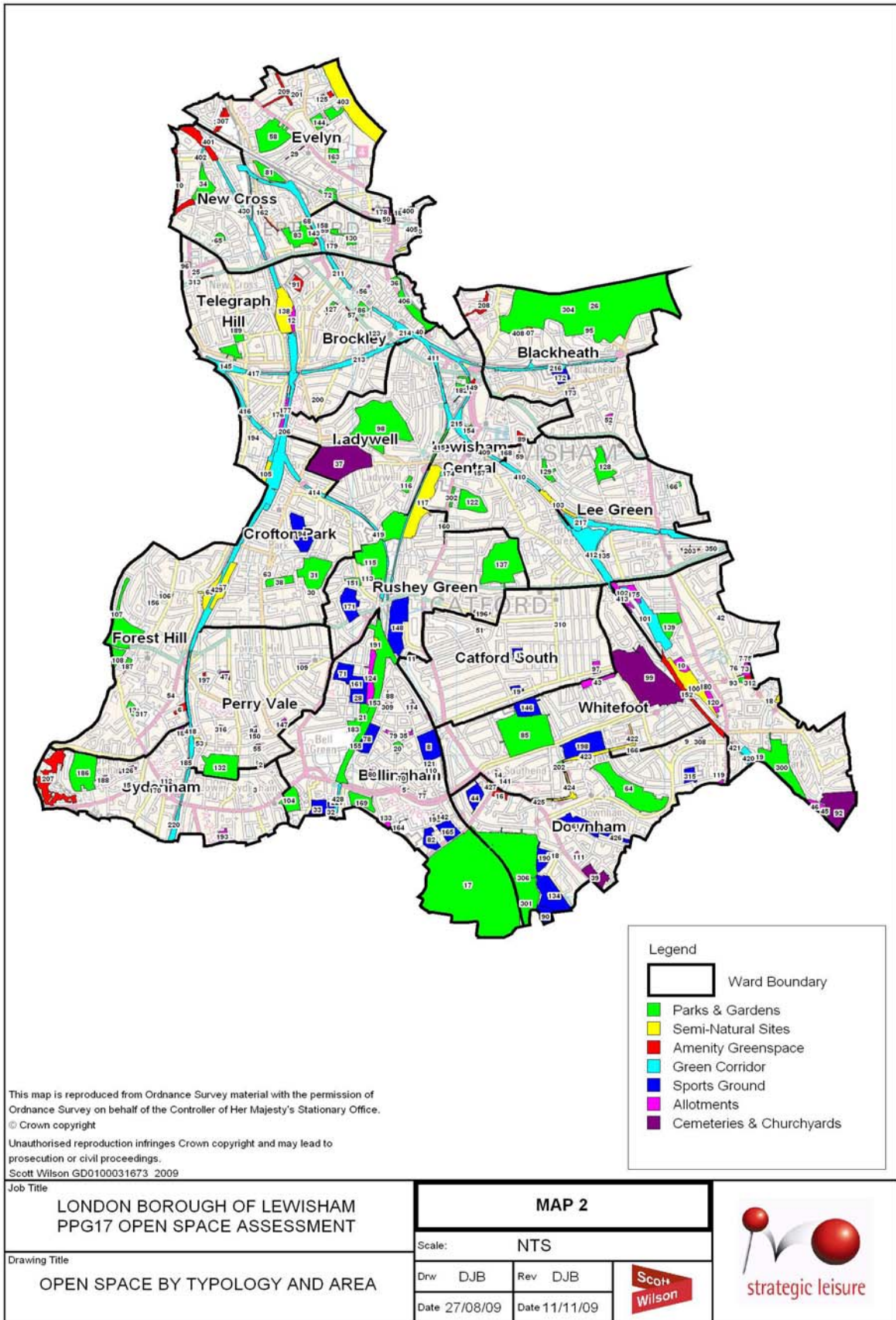


**Appendix B**  
**Parks Quality Scores (Lewisham Leisure and Open Space Study – May 2010)**

Site Name	ID number	Typology	Quality Score %	Quality Rating	Green Flag (2010)	Works completed/committed since survey
Eckington Gardens	65	Small Local	89	Excellent		
<i>Horniman Gardens</i>	107	Local	86	Excellent	Yes	
Chinbrook Meadows	46	Local	85	Excellent	Yes	Improved playground 2011/12
Manor House Gardens	128	Local	82	Excellent	Yes	
Sydenham Wells Park	186	Local	81	Excellent	Yes	
Ferranti Park	400	Small Local	79	Excellent		
Forster Memorial Park	85	Local	78	Excellent		
Telegraph Hill Park	189	Local	76	Excellent	Yes	
Beckenham Place Park	16/17	Metropolitan	73	Excellent		Subject to tender negotiations in 2011/12
Friendsbury Gardens	416	Small Local	73	Excellent		
Edith Nesbit Gardens	66	Small Local	72	Very Good		
Blythe Hill Fields	31	Local	71	Very Good		New Playground
Ladywell Fields	115	District	71	Very Good	Yes	Major landscaping project 2010
Horniman Play Park	108	Small Local	70	Very Good		
Deptford Park	58	Local	69	Very Good	Yes	Lost Green Flag in 2011 – New playground 2011
Lewisham Memorial Gardens	302	Local	69	Very Good		
Mountsfield Park	137	Local	69	Very Good		
Bellingham Play Park	21	Small Local	68	Very Good		
Brookmill Park	406	Local	68	Very Good	Yes	
Hilly Fields	98	Local	68	Very Good	Yes	New Playground and cricket square
Lewisham Park	122	Local	68	Very Good		
River Pool Linear Park	153	Small Local	68	Very Good		
Manor Park	129	Small Local	67	Very Good	Yes	Lost Green Flag in 2011 – New entrance, new kiosk, new signage 2012
Mayow Park	132	Local	67	Very Good		Green Flag awarded in 2011
Northbrook Park	139	Local	65	Very Good		New playground and splashpad
Southend Park	169	Local	64	Very Good		New Playground, fencing and bins 2011/12
Fordham Park	83	Local	63	Very Good		Relandscaped 2010/11
Downham Woodland Walk	202	Small Local	62	Very Good		
Bellingham Green	20	Small Local	61	Very Good	Yes	

Cornmill Gardens	182	Local	60	Good	Yes	
Riverview Walk	155	Small Local	60	Good		
Hatcham Gardens	96	Small Local	59	Good		Relandscaped 2010
Broadway Fields	36	Small Local	58	Good		
Baxter's Field	13	Small Local	57	Good		
Blackheath	26	Metropolitan	57	Good	Yes	New lighting, bunds, pathways 2011/12
Ladywell Green	116	Small Local	56	Good		
Margaret McMillan Park	130	Small Local	56	Good		Relandscaped 2010
Rushey Green London Squares	160	Small Local	56	Good		
Grove Park Library Gardens	93	Small Local	55	Good		
Folkestone Gardens	81	Local	54	Good		
Home Park	104	Local	54	Good		New outdoor Gym and outdoor Classroom installed
Deptford Memorial Gardens	57	Small Local	52	Good		
Luxmore Gardens	127	Small Local	52	Good		
Friendly Gardens	86	Small Local	51	Good		
Ravensbourne Park Gardens	151	Small Local	51	Good		
Sayes Court	163	Small Local	50	Good		
Pepys Park	144	Local	46	Good		Relandscaped 2010
Bridgehouse Meadows	34	Local	43	Average		East London Line Extension due to complete July 2012
Evelyn Green	72	Small Local	43	Average		
Kirkdale Green	112	Small Local	41	Average		
Durham Hill	64	Local	38	Average		

# Appendix C - Map and Schedule of Sites Surveyed



## Map 2 - Site ID Legend

ID	SITE NAME	TYOLOGY	AREA (Ha)	WARD
1	Abbotshall Road	Sports Ground	1.25	Catford South
2	Adamsrill Road, disused allotments	Allotments	0.20	Perry Vale
3	Addington Grove	Parks & Gardens	0.07	Sydenham
4	Adelaide Avenue - St Magarets Square	Amenity Greenspace	0.12	Ladywell
5	Adolf St/Overdown Road	Allotments	0.12	Bellingham
6	Albion Villas Millenium Green	Amenity Greenspace	0.73	Forest Hill
8	B.E. Corp, Randlesdown Road	Sports Ground	4.88	Bellingham
9	Ballamore/Shroffold Road	Allotments	0.09	Downham
10	Baring Road	Allotments	1.29	Grove Park
11	Barmeston Road	Allotments	0.30	Catford South
12	Barriedale	Allotments	0.95	Brockley
13	Baxter's Fields	Parks & Gardens	1.01	Forest Hill
14	Beachborough Gardens	Amenity Greenspace	0.28	Whitefoot
15	Beaulieu Avenue Green	Amenity Greenspace	0.12	Sydenham
16	Beckenham Hill Park	Amenity Greenspace	0.81	Downham
17	Beckenham Place Park	Parks & Gardens	70.47	Bellingham
18	Sydenham Cottages Nature Reserve	Semi-Natural Sites	0.57	Grove Park
19	Bellingham Bowling Club	Sports Ground	0.72	Catford South
20	Bellingham Green	Parks & Gardens	0.91	Bellingham
21	Bellingham Play Park	Parks & Gardens	2.11	Bellingham
25	Besson Street Nature Reserve	Semi-Natural Sites	0.16	Telegraph Hill
26	Blackheath	Parks & Gardens	70.79	Blackheath
28	Blackheath Hockey Club, Rubens Street	Sports Ground	2.03	Bellingham
29	Blackhorse Road	Allotments	0.28	Evelyn
30	Blythe Hill	Allotments	0.20	Crofton Park
31	Blythe Hill Fields	Parks & Gardens	7.06	Crofton Park
32	Bridge Leisure Centre East	Sports Ground	0.82	Bellingham
33	Bridge Leisure Centre West	Sports Ground	2.75	Bellingham
34	Bridgehouse Meadows	Parks & Gardens	3.18	New Cross
35	Broadmead	Allotments	0.44	Bellingham
36	Broadway Fields	Parks & Gardens	0.71	Brockley
37	Brockley & Ladywell Cemetery	Cemeteries & Churchyards	14.92	Ladywell
38	Brockley Hill Private Gardens	Parks & Gardens	1.99	Crofton Park
39	Bromley Hill Cemetery	Cemeteries & Churchyards	3.00	Downham
40	Brookmill Nature Reserve	Semi-Natural Sites	0.44	Brockley
42	Burnt Ash Pond Nature Reserve	Semi-Natural Sites	0.13	Grove Park
43	Castillon Road	Allotments	1.36	Whitefoot
44	Catford Wanderers Sports Club	Sports Ground	2.71	Downham
45	Chinbrook Community Orchard	Semi-Natural Sites	0.66	Grove Park
46	Chinbrook Meadows	Allotments	1.17	Grove Park
47	Christ Church	Cemeteries & Churchyards	0.58	Perry Vale
48	Clarendon Rise	Allotments	0.12	Lee Green
50	Crossfield Street Open Space	Amenity Greenspace	0.42	Evelyn
51	Culverley Green	Amenity Greenspace	0.16	Catford South
52	Dacre Park	Allotments	0.52	Blackheath
53	Dacres Wood Nature Reserve	Semi-Natural Sites	0.82	Perry Vale
54	Dartmouth Road Open Space	Amenity Greenspace	0.10	Forest Hill
55	Rear of 37 de Frene Road	Allotments	0.42	Perry Vale
56	Deloraine Street	Allotments	0.36	Brockley
57	Deptford Memorial Gardens	Amenity Greenspace	0.21	Brockley
58	Deptford Park	Parks & Gardens	7.29	Evelyn
59	Dermody Road	Amenity Greenspace	0.12	Lee Green
60	Devonshire Road Nature Reserve	Semi-Natural Sites	2.17	Forest Hill
61	Downham Playing Fields	Sports Ground	4.35	Downham
63	Duncombe Hill	Amenity Greenspace	0.10	Crofton Park
64	Durham Hill	Parks & Gardens	12.79	Downham
65	Eckington Gardens	Parks & Gardens	0.89	New Cross
66	Edith Nesbitt Gardens	Parks & Gardens	0.57	Lee Green
68	Edward Street	Allotments	0.04	New Cross
70	Elfrida Crescent East	Amenity Greenspace	0.17	Bellingham
71	Elm Lane Sports	Ground Sports Ground	2.83	Bellingham
72	Evelyn Green	Parks & Gardens	1.19	Evelyn
73	Exford Road	Allotments	1.41	Grove Park

ID	SITE NAME	TYOLOGY	AREA (Ha)	WARD
74	Exford Road Allotments Entrance	Amenity Greenspace	0.08	Grove Park
75	Exford Road r/o Grove Park Library	Amenity Greenspace	0.14	Grove Park
76	Exford Road/Burnt Ash Hill Triangle	Amenity Greenspace	0.10	Grove Park
77	Farmstead Road/Overdown Road	Amenity Greenspace	0.19	Bellingham
78	Firhill Road Playing Field	Sports Ground	3.47	Bellingham
79	Firhill Road North	Allotments	0.38	Bellingham
80	Firhill Road South	Allotments	0.31	Bellingham
81	Folkestone Gardens	Parks & Gardens	2.50	Evelyn
82	Forbanks Ground	Sports Ground	2.31	Bellingham
83	Fordham Park	Parks & Gardens	4.39	New Cross
84	Forest Hill Bowls Club, Wynell Road	Sports Ground	0.42	Perry Vale
85	Forster Memorial Park	Parks & Gardens	16.77	Whitefoot
86	Friendly Gardens	Parks & Gardens	1.06	Brockley
87	Garthorne Road Nature Reserve	Semi-Natural Sites	3.08	Crofton Park
88	Ghent Street	Amenity Greenspace	0.21	Bellingham
89	Gilmore Road Triangle	Amenity Greenspace	0.68	Lewisham Central
90	Goan Club, Ravensbourne Avenue	Sports Ground	2.47	Downham
91	Goldsmith's College Green	Amenity Greenspace	1.25	Brockley
92	Grove Park Cemetery	Cemeteries & Churchyards	9.35	Grove Park
93	Grove Park Library Gardens	Parks & Gardens	0.43	Grove Park
94	Guys Hospital Sports Ground	Sports Ground	5.87	Crofton Park
95	Hare & Billet Pond	Semi-Natural Sites	0.10	Blackheath
96	Hatcham Gardens	Parks & Gardens	0.46	Telegraph Hill
97	Hazlebank	Allotments	0.81	Catford South
98	Hilly Fields	Parks & Gardens	18.98	Ladywell
99	Hither Green Cemetery	Cemeteries & Churchyards	23.26	Whitefoot
100	Hither Green Nature Reserve	Semi-Natural Sites	5.48	Grove Park
101	Hither Green Railway Land	Green Corridor	5.35	Grove Park
102	Hither Green Sidings	Green Corridor	0.40	Grove Park
103	Hither Green	Semi-Natural Sites	1.57	Lee Green
104	Home Park	Parks & Gardens	3.15	Bellingham
105	Honor Oak Adventure Playground and Reserve	Semi-Natural Sites	1.02	Telegraph Hill
106	Honor Oak Covered Reservoir	Semi-Natural Sites	0.49	Forest Hill
107	Horniman Gardens	Parks & Gardens	8.03	Forest Hill
108	Horniman Triangle Play Park	Parks & Gardens	1.65	Forest Hill
109	Hurstbourne Road	Allotments	0.25	Perry Vale
110	Jim Hurren	Allotments	0.12	Bellingham
111	Kendale Road	Allotments	0.36	Downham
112	Kirkdale Green	Parks & Gardens	0.25	Sydenham
113	Iona Close Orchard	Semi-Natural Sites	0.33	Rushey Green
114	Knapmill Way	Allotments	0.43	Bellingham
	Ladywell Fields	Parks & Gardens	13.03	Rushey Green
116	Ladywell Green	Parks & Gardens	0.91	Ladywell
117	Ladywell Nature Reserve	Semi-Natural Sites	9.17	Lewisham Central
118	Land r/o Garden Gate PH, Ashgrove Road	Amenity Greenspace	0.08	Downham
119	Launcelot Road disused allotments	Allotments	0.29	Downham
120	Lee and District Land Club	Allotments	1.18	Grove Park
121	Leslie Silk	Allotments	0.11	Bellingham
122	Lewisham Park	Parks & Gardens	4.13	Lewisham Central
123	Lewisham Way	Parks & Gardens	0.06	Brockley
124	Long Meadow	Allotments	2.89	Bellingham
125	Longshore Open Space	Amenity Greenspace	0.70	Evelyn
126	Longton Nursery	Allotments	0.52	Sydenham
127	Luxmore Gardens	Parks & Gardens	0.41	Brockley
128	Manor House Gardens	Parks & Gardens	3.88	Lee Green
129	Manor Park	Parks & Gardens	1.34	Lee Green
130	Margaret McMillan Park	Parks & Gardens	1.33	New Cross
132	Mayow Park	Parks & Gardens	7.21	Perry Vale
133	Meadow Close	Allotments	0.47	Bellingham
134	Midland Bank Sports Ground, Calmont Road	Sports Ground	7.44	Downham
135	Milborough Crescent	Amenity Greenspace	0.12	Lee Green
137	Mountsfield Park	Parks & Gardens	13.32	Rushey Green
138	New Cross Gate Cutting Nature Reserve	Semi-Natural Sites	5.79	Telegraph Hill
139	Northbrook Park	Parks & Gardens	3.78	Grove Park
141	Oldstead Road	Allotments	0.27	Whitefoot

ID	SITE NAME	TYOLOGY	AREA (Ha)	WARD
142	Oslac Road	Amenity Greenspace	0.13	Bellingham
143	Pagnell Street	Amenity Greenspace	0.24	New Cross
144	Pepys Park	Parks & Gardens	2.87	Evelyn
145	Nunhead Cutting	Green Corridor	2.87	Telegraph Hill
146	Prendergast Girls School Fields	Sports Ground	3.71	Whitefoot
147	Priestfield Road	Allotments	0.42	Perry Vale
148	Private Banks' Sports Ground	Sports Ground	7.94	Rushey Green
149	Quaggy Gardens Amenity	Greenspace	0.31	Lewisham Central
150	Queenswood Road Nature Reserve	Semi-Natural Sites	0.29	Perry Vale
151	Ravensbourne Park Gardens	Parks & Gardens	0.83	Rushey Green
152	Reigate Road Amenity	Greenspace	3.52	Whitefoot
153	River Pool Linear Walk	Parks & Gardens	8.81	Bellingham
154	Riverdale Sculpture Park	Parks & Gardens	0.28	Lewisham Central
155	Riverview Walk (Waterlink Way)	Parks & Gardens	5.24	Bellingham
156	Rocombe Crescent Triangle	Amenity Greenspace	0.08	Forest Hill
157	Romborough Gardens	Allotments	0.16	Lewisham Central
158	Royal Naval Place Stage 1	Allotments	0.21	New Cross
159	Royal Naval Place Stage 2	Allotments	0.11	New Cross
160	Rushey Green London Squares	Parks & Gardens	0.24	Rushey Green
161	Rutland Walk Sports Club	Sports Ground	2.29	Bellingham
162	Sanford Street	Amenity Greenspace	0.39	New Cross
163	Sayes Court Park	Parks & Gardens	1.12	Evelyn
164	Sedgehill Road	Allotments	0.67	Bellingham
165	Sedgehill School	Sports Ground	2.78	Bellingham
166	Shaw Road Open Space	Amenity Greenspace	0.31	Whitefoot
168	Slaithwaite Road	Allotments	0.21	Lee Green
169	Southend Park	Parks & Gardens	2.72	Bellingham
170	St Bartholomews Churchyard	Cemeteries & Churchyards	0.30	Sydenham
171	St Dunstan's College, Stanstead Road	Sports Ground	4.24	Rushey Green
172	St. Josephs Academy Playing Fields	Sports Ground	1.81	Blackheath
173	St Margarets Churchyard	Cemeteries & Churchyards	0.59	Blackheath
174	St Marys Churchyard	Cemeteries & Churchyards	0.89	Lewisham Central
175	St Mildred's Road	Allotments	1.48	Grove Park
176	St Norbert Green	Amenity Greenspace	0.13	Telegraph Hill
177	St Norbert Road	Allotments	1.02	Telegraph Hill
178	St Paul's Churchyard	Cemeteries & Churchyards	0.87	Evelyn
179	Stanley Street	Allotments	0.10	New Cross
180	Stratfield House/Ringway Centre, Baring	Amenity Greenspace	0.09	Grove Park
181	Sue Godfrey Nature Park	Semi-Natural Sites	0.60	New Cross
182	Cornmill gardens	Parks & Gardens	1.24	Lewisham Central
183	Bell Green Pond	Semi-Natural Sites	0.47	Bellingham
184	Sydenham Park	Allotments	0.40	Sydenham
185	Rear of 141-143 Sydenham Park Road	Amenity Greenspace	0.30	Sydenham
186	Sydenham Wells Park	Parks & Gardens	8.14	Sydenham
187	Tarleton Gardens incl Eliot Bank Hedge	Parks & Gardens	0.41	Forest Hill
188	Taylors Lane	Allotments	0.48	Sydenham
189	Telegraph Hill Park	Parks & Gardens	4.16	Telegraph Hill
190	Ten-Em-Bee Sports Club	Sports Ground	2.61	Downham
191	The Vineries Nature Reserve	Semi-Natural Sites	0.65	Bellingham
192	Thurbarn Road	Amenity Greenspace	0.14	Bellingham
193	Trewsbury Road	Allotments	0.95	Sydenham
194	Turnham Road Green	Amenity Greenspace	0.06	Telegraph Hill
196	Weavers Estate	Allotments	0.42	Rushey Green
197	Westbourne Drive Enclosure	Amenity Greenspace	0.37	Perry Vale
198	Whitefoot Lane Recreation Ground	Sports Ground	7.09	Whitefoot
200	Wickham Gardens	Parks & Gardens	0.07	Brockley
201	Windlass Place	Allotments	0.31	Evelyn
202	Woodland Walk	Parks & Gardens	0.29	Whitefoot
203	Rear of Woodyates and Pitfold Rd	Amenity Greenspace	0.67	Lee Green
206	Forest Hill to New Cross Railway Cutting	Green Corridor	15.88	Ladywell
207	Hillcrest Estate Woodland	Amenity Greenspace	7.07	Sydenham
208	Lethbridge Close	Amenity Greenspace	1.21	Blackheath
209	Rainsborough Avenue Embankments, River R	Amenity Greenspace	1.30	Evelyn
210	Senegal Railway Banks	Amenity Greenspace	6.42	New Cross
211	New Cross to St Johns railway cutting	Green Corridor	1.47	Brockley

ID	SITE NAME	TYOLOGY	AREA (Ha)	WARD
213	Brockley to St Johns	Green Corridor	3.73	Brockley
214	St John's Station	Green Corridor	1.74	Brockley
215	Lewisham Railway Triangles	Green Corridor	3.38	Lewisham Central
216	Lewisham to Blackheath Station	Green Corridor	2.83	Blackheath
217	Hither Green Station	Green Corridor	7.35	Lee Green
219	Chinbrook Embankment	Green Corridor	0.21	Grove Park
220	Railsides south of Sydenham Station	Green Corridor	1.59	Sydenham
221	Former Lower Sydenham Station Allotments	Green Corridor	0.47	Bellingham
300	Chinbrook Meadows	Parks & Gardens	10.82	Grove Park
301	Beckenham Place Park - Summerhouse Fields	Parks & Gardens	7.66	Downham
302	Lewisham Memorial Gardens	Parks & Gardens	0.50	Lewisham Central
304	Whitfields Mount Pond	Semi-Natural Sites	0.14	Blackheath
306	Beckenham Place Park - Common	Parks & Gardens	17.48	Downham
307	Silwood Triangle Amenity	Greenspace	0.83	Evelyn
308	Downham/The Green Amenity	Greenspace	0.22	Downham
309	Grangemill Way	Allotments	0.25	Bellingham
310	St Andrews Churchyard	Cemeteries & Churchyards	0.28	Catford South
311	Charlottenburg Gardens	Amenity Greenspace	0.14	Lewisham Central
312	Marvels Lane	Amenity Greenspace	1.01	Grove Park
313	Queens Road	Amenity Greenspace	0.23	Telegraph Hill
314	Warren Avenue	Sports Ground	6.26	Downham
315	Knights Academy	Sports Ground	1.56	Downham
316	Forest Hill School	Sports Ground	0.30	Perry Vale
317	Sydenham School	Sports Ground	0.16	Forest Hill
318	Silwood Open Space	Amenity Greenspace	0.67	Evelyn
350	Pitfold Close Amenity	Greenspace	0.13	Lee Green
400	Ferranti Park	Parks & Gardens	0.23	New Cross
401	West of SELCHP	Green Corridor	0.12	New Cross Ward
402	Surrey Canal	Green Corridor	0.61	New Cross Ward
403	The River Thames and Deptford Creek	Semi-Natural Sites	15.31	Evelyn Ward
404	The River Thames and Deptford Creek	Semi-Natural Sites	1.57	New Cross Ward
405	British Gas site beside Deptford Creek	Semi-Natural Sites	0.23	New Cross Ward
406	Brookmill Park & River Ravensbourne	Parks & Gardens	2.46	Brockley
407	Blackheath	Semi-Natural Sites	0.34	Blackheath Ward
408	Blackheath	Semi-Natural Sites	0.18	Blackheath Ward
409	Morley Road	Green Corridor	1.15	Lewisham Central
410	Pascoe Road	Green Corridor	1.61	Lewisham Central
411	St John's	Green Corridor	11.32	Lewisham Central
412	Chiltonian Green Corridor	Green Corridor	13.10	Lee Green Ward
413	St. Mildreds	Allotments	1.73	Grove Park Ward
414	Crofton Park Green Corridor	Green Corridor	0.59	Crofton Park Ward
415	Ladywell	Parks & Gardens	0.59	Lewisham Central
416	Pincott Place	Green Corridor	2.76	Telegraph Hill
417	Brockley-Endwell Road	Green Corridor	0.91	Telegraph Hill
418	Forest Hill-Sydenham	Green Corridor	3.73	Perry Vale Ward
419	Ravensbourne Green Corridor	Green Corridor	27.55	Ladywell Ward
420	Amblecote Meadows	Green Corridor	1.63	Grove Park Ward
421	Grove Park	Green Corridor	0.16	Grove Park Ward
422	Downham Woodland Walk	Semi-Natural Sites	0.86	Whitefoot Ward
423	Downham Woodland Walk	Semi-Natural Sites	1.44	Downham Ward
424	Downham Woodland Walk	Semi-Natural Sites	0.92	Downham Ward
425	Woodland Walk	Semi-Natural Sites	0.23	Downham Ward
426	Spring Brook at Downham Playing Fields	Sports Ground	1.21	Downham Ward
427	Peter Pan's Pool	Semi-Natural Sites	0.33	Downham Ward
428	Worsley Bridge	Green Corridor	0.68	Bellingham Ward
429	Forest Hill to New Cross Railway Cutting	Green Corridor	38.07	Crofton Park Ward
430	New Cross/New Cross Gate	Green Corridor	9.05	New Cross

